

BETTER STANDS STAND ASSESSMENT GUIDELINES



ABOUT THIS DOCUMENT	3
GENERAL GUIDELINES & FRAMEWORK	4
PRE-EVENT ASSESSMENT GUIDELINES	45
ONSITE ASSESSMENT GUIDELINES	79
FAQs	123
CONTACT	126



ABOUT THIS DOCUMENT

This document is a living document and will be continuously updated to provide ongoing support for the following:

- Guide accredited contractors and exhibitors to make better booth design choices
- Help to understand certification decisions and requirements

Each of the 10 categories includes examples of the typical items an assessor might check to identify indicators for disposable elements vs. reusable elements.



GENERAL GUIDELINES & FRAMEWORK

ABOUT THIS DOCUMENT

This document is a living document and will be continuously updated to provide ongoing support for the following:

- Guide accredited contractors and exhibitors to make better booth design choices
- Help to understand certification decisions and requirements

Each of the 10 categories includes examples of the typical items an assessor might check to identify indicators for disposable elements vs. reusable elements.



BETTER STANDS FRAMEWORK



The 10 key elements of a stand are assessed for reuse. This determines its categorization of Disposable, Bronze, Silver or Gold.



		FULLY DISPOSABLE	BRONZE	SILVER	GOLD
CATEGORY	ITEMS				
REUSED	1 Stand structure and walls	Structure or framework of the stand, walls, panels for meeting rooms, backdrop	✗	✓	✓
	2 Platform or raised flooring	Structure of flooring (excluding surface covering, e.g. carpet)	✗	✓	✓
	3 Furniture and equipment	Showcases, counters, chairs, tables, sofa, coffee table, flyer stand, LED walls, TV, AV equipment etc.	✗	✓	✓
	4 Lighting	All kinds of lighting in the stand and within showcases	✗	✓	✓
	5 Fascia and overhead signage	Overhead signage or branding, fascia, company logo on top of the stand structure	✗	✗	✓
	6 Rigged structure	Any rigged structure including lighting gantries or other structural elements	✗	✗	✓
	7 Ceiling	Any form of ceiling e.g. fabric ceilings, solid ceilings for lighting or stand support	✗	✗	✓
	8 Display facilities	Built-in or detachable product display cabinets, lightboxes etc.	✗	✗	✓
REUSED / RECYCLED	9 Floor covering	Carpet, floor tiles, HDF coverings, lino etc.	✗	✗	✓
	10 Graphics and decorative items	Stand graphics that are wall-mounted or floor-standing (not overhead) and any other decorative items such as plants and flowers, models and ornaments	✗	✗	✓

- The Better Stands pre-event certification will only be available to accredited service providers and their clients.
- We certify the stand itself. Neither the products on display (e.g. a tiling show where tiling is the product) nor the exhibitor's marketing materials will be assessed.
- Assessors will look for indicators of reuse and reusability. This typically involves evaluating modularity (e.g. systems and led tiles) or standardisation (e.g. in measurements) in your documents.
- Modular refers to when a certain element of a stand can be used in multiple ways at multiple events (e.g. walling that can be fixed together in hundreds of different styles). It does not refer to a particular system type. Wooden can be modular. E. g. Stock panels.
- Standardisation means that the same dimensions are always used for a certain material (wood panels for walling or flooring) or that it can be clearly identified as part of a standard product range with storage and maintenance processes in place (e.g., rental contracts).

- Assessors will be reasonable during the assessment. If at least 90% of the material in one category is either modular or standardised, the category will be considered passed.
- There will be sample onsite assessments during which the Better Stands team will verify the accountability of your documents by assessing the booth onsite. So, ensure that you only use finalised documents for certification.
- We are looking for reuse as the same item within the trade fair industry, not downcycling, recycling or upcycling (apart from categories 9 and 10). If a wooden wall is ground up and turned into firewood, or a shanty house, or carpet is used on farmer's fields, this is lowering the value of the product, and it eventually exists the waste stream so does not count.
- Being disposed of at/after the show is OK if the stand has clearly been used before and has reached end of life.
- To ensure Better Stands fully understands everything, take the opportunity to add comments to each of your documents (in the future on our platform) and respond to any questions from the assessors.

1. STAND STRUCTURE AND WALLS



1. STAND STRUCTURE AND WALLING



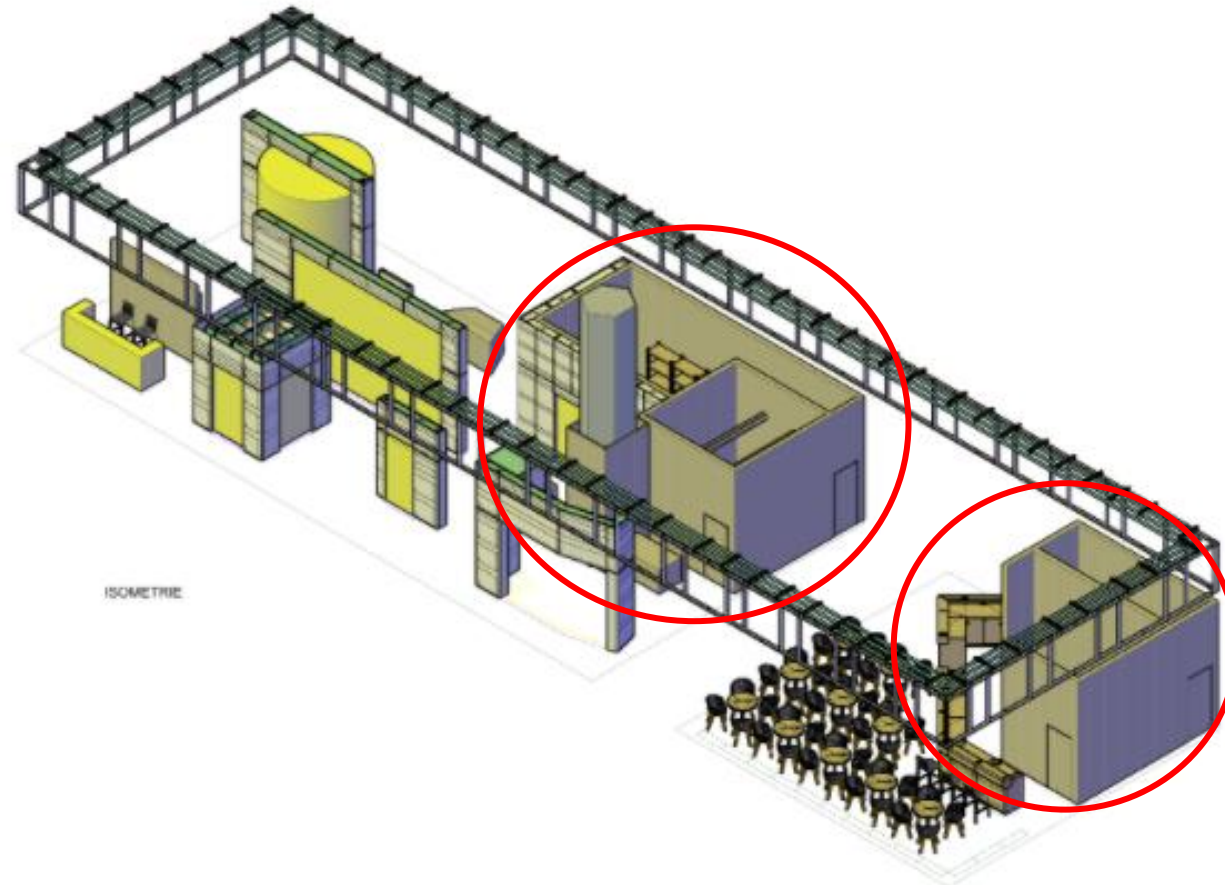
General Guidelines:

- Wood booths can be reusable or single use and are the most challenging to assess.
- Almost all non-wood walling systems are reusable.
- Printed fabric in frame and fabric doesn't count as walling but as signage (category 10).
- Cardboard booths also generally count as printed signage (category 10) although new systems are challenging that.

	CATEGORY	ITEMS			
REUSED	1	Stand structure and walls	Structure or framework of the stand, walls, panels for meeting rooms, backdrop		
	2	Platform or raised flooring	Structure of flooring (excluding surface covering, e.g. carpet)		
	3	Furniture and equipment	Showcases, counters, chairs, tables, sofa, coffee table, flyer stand, LED walls, TV, AV equipment etc.		
	4	Lighting	All kinds of lighting in the stand and within showcases		
	5	Fascia and overhead signage	Overhead signage or branding, fascia, company logo on top of the stand structure		
	6	Rigged structure	Any rigged structure including lighting gantries or other structural elements		
	7	Ceiling	Any form of ceiling e.g. fabric ceilings, solid ceilings for lighting or stand support		
	8	Display facilities	Built-in or detachable product display cabinets, lightboxes etc.		
REUSED / RECYCLED	9	Floor covering	Carpet, floor tiles, HDF coverings, lino etc.		
	10	Graphics and decorative items	Stand graphics that are wall-mounted or floor-standing (not overhead) and any other decorative items such as plants and flowers, models and ornaments		

1. STAND STRUCTURE AND WALLING

What counts as stand structure and walls?



1. STAND STRUCTURE AND WALLING

What counts as stand structure and walls?



2. PLATFORM AND RAISED FLOOR



2. PLATFORM AND RAISED FLOOR



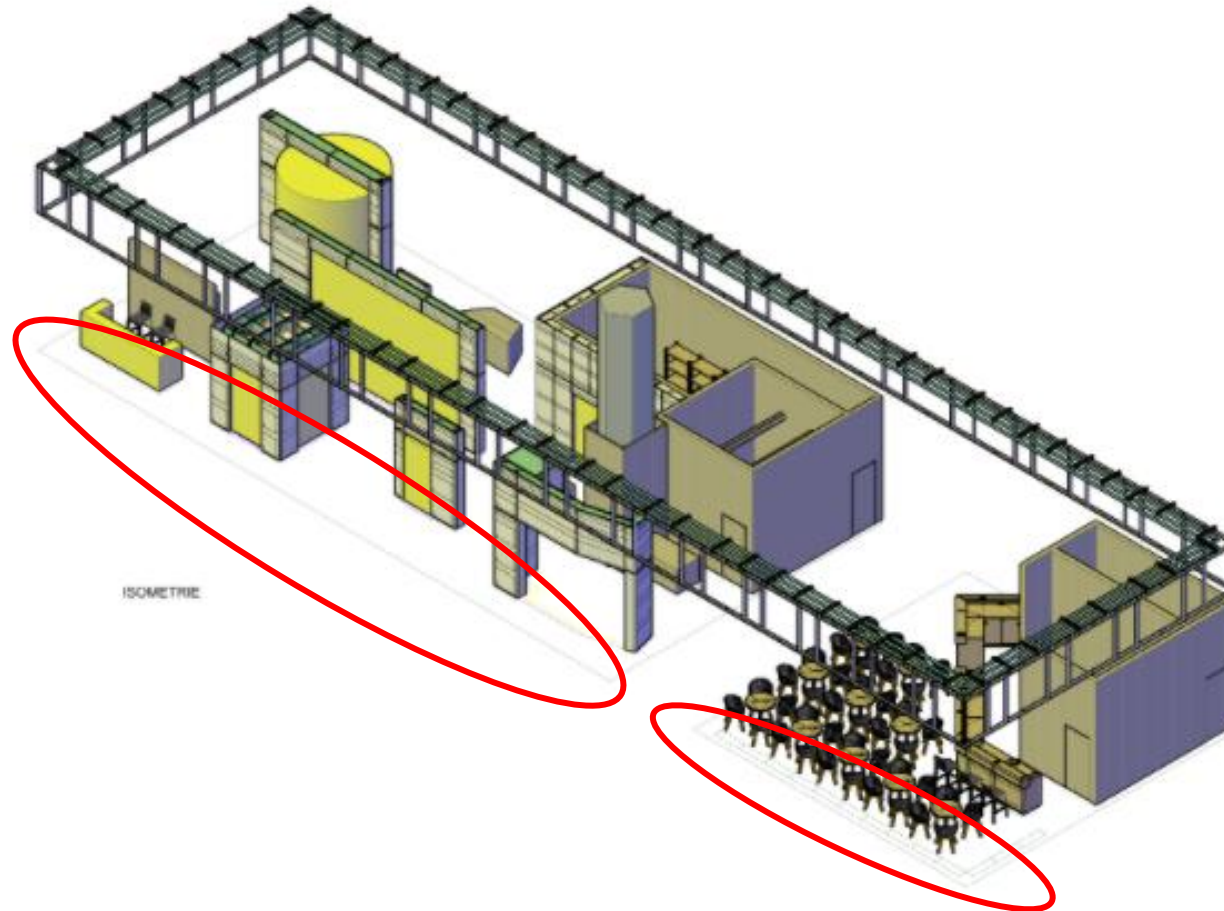
General Guidelines:

- Not all stands have a floor platform, so this is easy to locate
- Floor platforms are raised floors from 1cm and higher
- This category does not include floor coverings such as carpet, tile, laminate etc which is category 9
- Most countries now use modular systems for this

	CATEGORY	ITEMS				
REUSED	1	Stand structure and walls	Structure or framework of the stand, walls, panels for meeting rooms, backdrop			
	2	Platform or raised flooring	Structure of flooring (excluding surface covering, e.g. carpet)			
	3	Furniture and equipment	Showcases, counters, chairs, tables, sofa, coffee table, flyer stand, LED walls, TV, AV equipment etc.			
	4	Lighting	All kinds of lighting in the stand and within showcases			
	5	Fascia and overhead signage	Overhead signage or branding, fascia, company logo on top of the stand structure			
	6	Rigged structure	Any rigged structure including lighting gantries or other structural elements			
	7	Ceiling	Any form of ceiling e.g. fabric ceilings, solid ceilings for lighting or stand support			
	8	Display facilities	Built-in or detachable product display cabinets, lightboxes etc.			
REUSED / RECYCLED	9	Floor covering	Carpet, floor tiles, HDF coverings, lino etc.			
	10	Graphics and decorative items	Stand graphics that are wall-mounted or floor-standing (not overhead) and any other decorative items such as plants and flowers, models and ornaments			

2. PLATFORM AND RAISED FLOOR

What counts as stand platform and raised floor?



2. PLATFORM AND RAISED FLOOR

What counts as stand platform and raised floor?



3. FURNITURE AND EQUIPMENT



3. FURNITURE AND EQUIPMENT



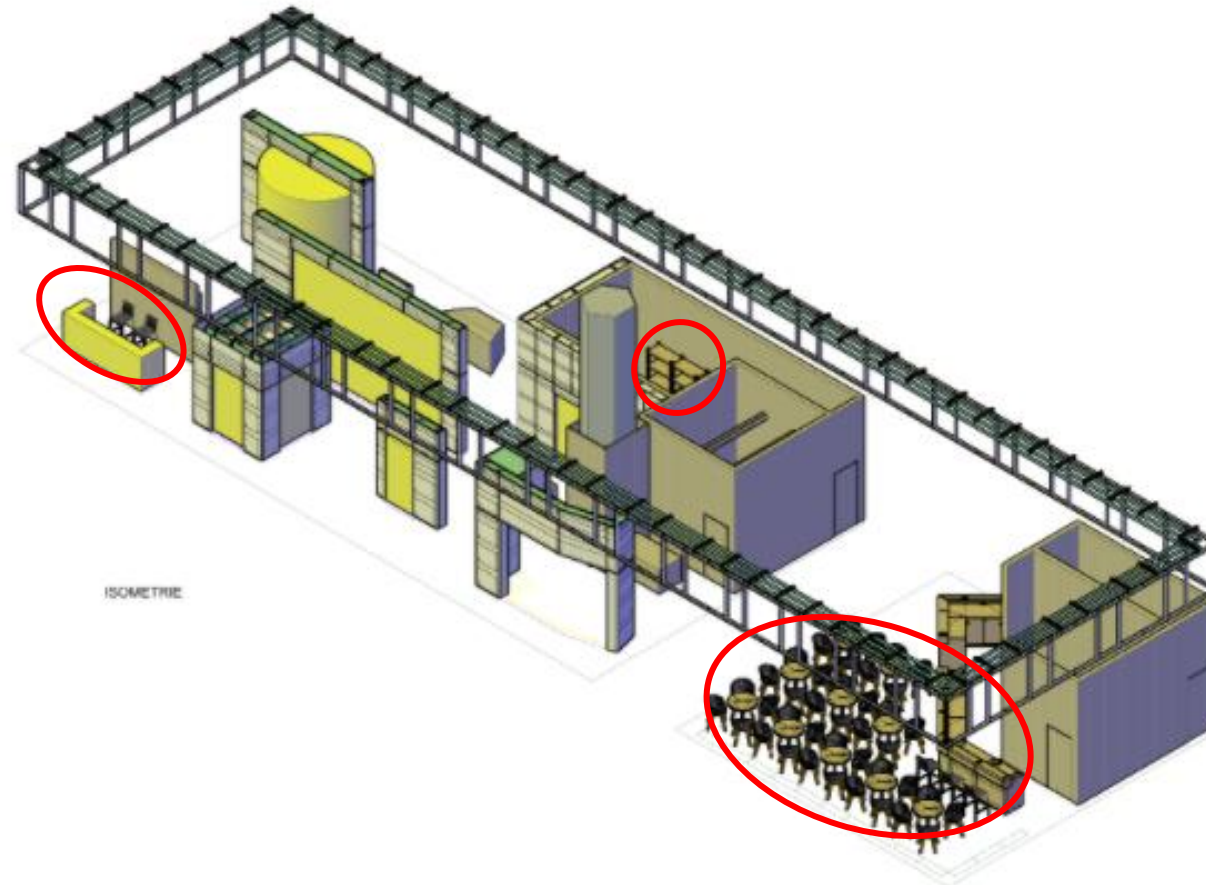
General Guidelines:

- Furniture is now very rarely disposed of as the value is high or it's often rented
- The US market can be an exception so look for furniture in bins or abandoned
- If venues or events have a donation programme and furniture is collected, this counts as reuse
- Assume benefit of the doubt unless evidence to the contrary

	CATEGORY	ITEMS				
REUSED	1	Stand structure and walls	Structure or framework of the stand, walls, panels for meeting rooms, backdrop			
	2	Platform or raised flooring	Structure of flooring (excluding surface covering, e.g. carpet)			
	3	Furniture and equipment	Showcases, counters, chairs, tables, sofa, coffee table, flyer stand, LED walls, TV, AV equipment etc.			
	4	Lighting	All kinds of lighting in the stand and within showcases			
	5	Fascia and overhead signage	Overhead signage or branding, fascia, company logo on top of the stand structure			
	6	Rigged structure	Any rigged structure including lighting gantries or other structural elements			
	7	Ceiling	Any form of ceiling e.g. fabric ceilings, solid ceilings for lighting or stand support			
	8	Display facilities	Built-in or detachable product display cabinets, lightboxes etc.			
REUSED / RECYCLED	9	Floor covering	Carpet, floor tiles, HDF coverings, lino etc.			
	10	Graphics and decorative items	Stand graphics that are wall-mounted or floor-standing (not overhead) and any other decorative items such as plants and flowers, models and ornaments			

3. FURNITURE AND EQUIPMENT

What counts as furniture and equipment?



3. FURNITURE AND EQUIPMENT

What counts as furniture and equipment?



4. LIGHTING



4. LIGHTING



General Guidelines:

- Lighting is now very rarely disposed of as the value is high
- One exception can be small bits of LED striplight used to backlight shelves, signage etc
- Evidence of this being thrown in bins rather than wrapped up neatly
- Assume benefit of the doubt unless evidence to the contrary

	CATEGORY	ITEMS			
REUSED	1	Stand structure and walls	Structure or framework of the stand, walls, panels for meeting rooms, backdrop		
	2	Platform or raised flooring	Structure of flooring (excluding surface covering, e.g. carpet)		
	3	Furniture and equipment	Showcases, counters, chairs, tables, sofa, coffee table, flyer stand, LED walls, TV, AV equipment etc.		
	4	Lighting	All kinds of lighting in the stand and within showcases		
	5	Fascia and overhead signage	Overhead signage or branding, fascia, company logo on top of the stand structure		
	6	Rigged structure	Any rigged structure including lighting gantries or other structural elements		
	7	Ceiling	Any form of ceiling e.g. fabric ceilings, solid ceilings for lighting or stand support		
	8	Display facilities	Built-in or detachable product display cabinets, lightboxes etc.		
REUSED / RECYCLED	9	Floor covering	Carpet, floor tiles, HDF coverings, lino etc.		
	10	Graphics and decorative items	Stand graphics that are wall-mounted or floor-standing (not overhead) and any other decorative items such as plants and flowers, models and ornaments		

4. LIGHTING

What counts as lighting?



4. LIGHTING

What counts as lighting?



5. FASCIA AND OVERHEAD SIGNAGE



5. FASCIA AND OVERHEAD SIGNAGE



General Guidelines:

- Fascia and overhead signage is a custom decorative band, panel, or 3D writing added on top of standard walling.
- It often prominently displays the company logo and name, ranging from simple banners and printed fabric displays to more elaborate 3D structures and illuminated designs.

	CATEGORY	ITEMS			
REUSED	1	Stand structure and walls	Structure or framework of the stand, walls, panels for meeting rooms, backdrop		
	2	Platform or raised flooring	Structure of flooring (excluding surface covering, e.g. carpet)		
	3	Furniture and equipment	Showcases, counters, chairs, tables, sofa, coffee table, flyer stand, LED walls, TV, AV equipment etc.		
	4	Lighting	All kinds of lighting in the stand and within showcases		
	5	Fascia and overhead signage	Overhead signage or branding, fascia, company logo on top of the stand structure		
	6	Rigged structure	Any rigged structure including lighting gantries or other structural elements		
	7	Ceiling	Any form of ceiling e.g. fabric ceilings, solid ceilings for lighting or stand support		
	8	Display facilities	Built-in or detachable product display cabinets, lightboxes etc.		
REUSED / RECYCLED	9	Floor covering	Carpet, floor tiles, HDF coverings, lino etc.		
	10	Graphics and decorative items	Stand graphics that are wall-mounted or floor-standing (not overhead) and any other decorative items such as plants and flowers, models and ornaments		

5. FASCIA AND OVERHEAD SIGNAGE

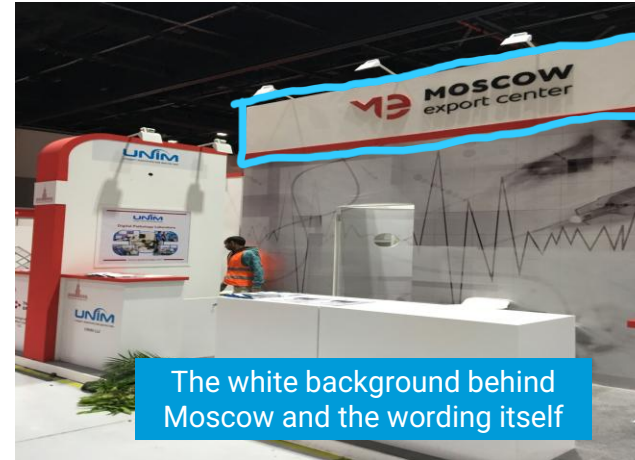
What counts as fascia and overhead signage?



3D lettering added onto the walling



The whole of the white square with Pakistan on it



The white background behind Moscow and the wording itself



The Nutella sign and the curved structure it's mounted on



3D structure and lettering added on top of the structure and walling



Circular structure added on top of the walling with 3D lettering



Warwick lettering and the black sign



Indovasive lettering and black wedged sign

5. FASCIA AND OVERHEAD SIGNAGE

What counts as fascia and overhead signage?



6. RIGGED STRUCTURE



6. RIGGED STRUCTURE



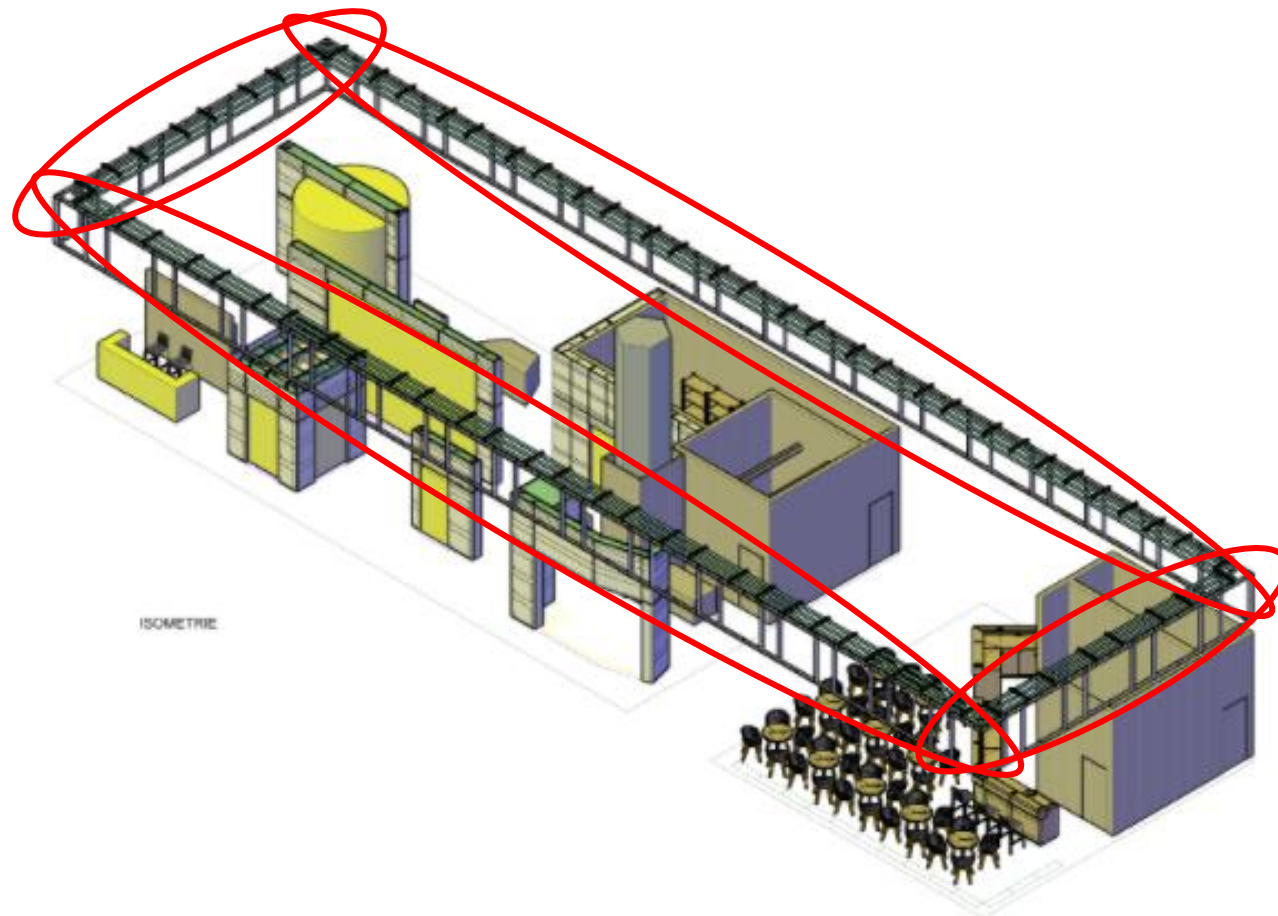
General Guidelines:

- This does not include the actual rigging chains, ropes etc but instead the structure brought to be suspended from the ceiling.
- Rigged structure is always hung from the roof, not the booth
- It's increasingly uncommon to see a disposable rigged structure as reusable is lighter and safer. Look for wooden structures as potentially disposable
- The same indicators for walling largely apply

	CATEGORY	ITEMS			
REUSED	1	Stand structure and walls	Structure or framework of the stand, walls, panels for meeting rooms, backdrop		
	2	Platform or raised flooring	Structure of flooring (excluding surface covering, e.g. carpet)		
	3	Furniture and equipment	Showcases, counters, chairs, tables, sofa, coffee table, flyer stand, LED walls, TV, AV equipment etc.		
	4	Lighting	All kinds of lighting in the stand and within showcases		
	5	Fascia and overhead signage	Overhead signage or branding, fascia, company logo on top of the stand structure		
	6	Rigged structure	Any rigged structure including lighting gantries or other structural elements		
	7	Ceiling	Any form of ceiling e.g. fabric ceilings, solid ceilings for lighting or stand support		
	8	Display facilities	Built-in or detachable product display cabinets, lightboxes etc.		
REUSED / RECYCLED	9	Floor covering	Carpet, floor tiles, HDF coverings, lino etc.		
	10	Graphics and decorative items	Stand graphics that are wall-mounted or floor-standing (not overhead) and any other decorative items such as plants and flowers, models and ornaments		

6. RIGGED STRUCTURE

What counts as rigged structure?



6. RIGGED STRUCTURE

What counts as rigged structure?



7. CEILING



7. CEILING



General Guidelines:

- Many shows don't allow ceiling
- The same indicators for walling largely apply
- Cloth/fabric ceiling is generally disposed of, so check with the project manager/foreman to be sure, or visit during breakdown

	CATEGORY	ITEMS			
REUSED	1	Stand structure and walls	Structure or framework of the stand, walls, panels for meeting rooms, backdrop		
	2	Platform or raised flooring	Structure of flooring (excluding surface covering, e.g. carpet)		
	3	Furniture and equipment	Showcases, counters, chairs, tables, sofa, coffee table, flyer stand, LED walls, TV, AV equipment etc.		
	4	Lighting	All kinds of lighting in the stand and within showcases		
	5	Fascia and overhead signage	Overhead signage or branding, fascia, company logo on top of the stand structure		
	6	Rigged structure	Any rigged structure including lighting gantries or other structural elements		
	7	Ceiling	Any form of ceiling e.g. fabric ceilings, solid ceilings for lighting or stand support		
	8	Display facilities	Built-in or detachable product display cabinets, lightboxes etc.		
REUSED / RECYCLED	9	Floor covering	Carpet, floor tiles, HDF coverings, lino etc.		
	10	Graphics and decorative items	Stand graphics that are wall-mounted or floor-standing (not overhead) and any other decorative items such as plants and flowers, models and ornaments		

8. DISPLAY FACILITIES



8. DISPLAY FACILITIES



General Guidelines:

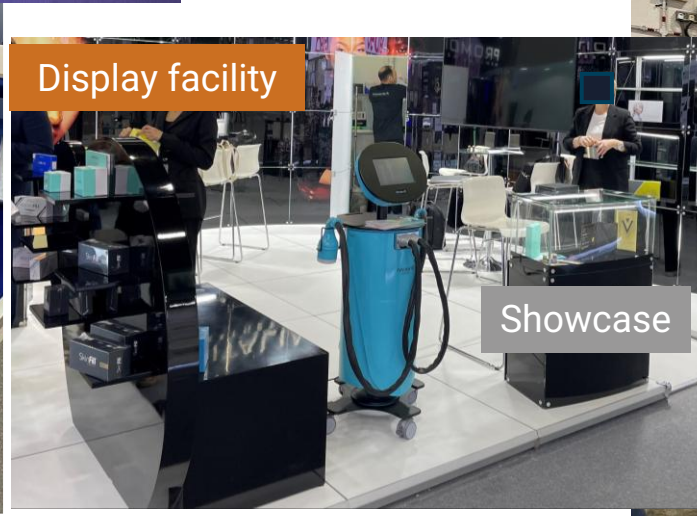
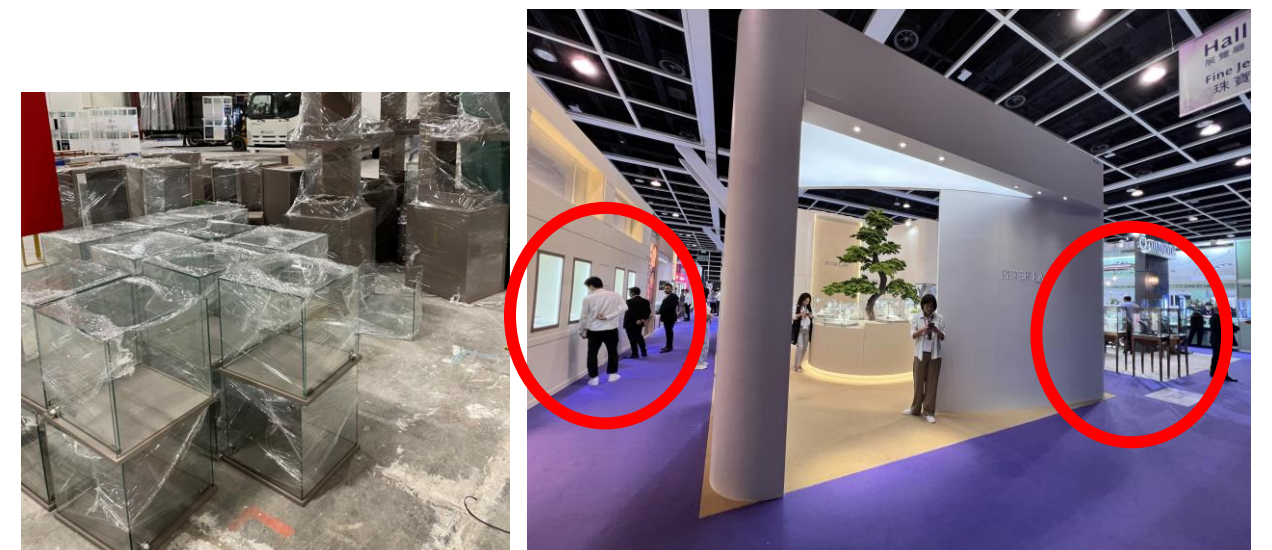
- Generally this covers items such as platforms and shelving specifically to display the product or exhibit
- But it can also include light boxes
- Be careful not to confuse showcases (which are in category 3 as they are standard rental furniture) with display facilities
- If there is no glass/plastic, this is likely to be a display facility not a showcase – see Showcases (Furniture Cat 3) vs display facilities (Cat 8) for clarity

	CATEGORY	ITEMS			
REUSED	1	Stand structure and walls	Structure or framework of the stand, walls, panels for meeting rooms, backdrop		
	2	Platform or raised flooring	Structure of flooring (excluding surface covering, e.g. carpet)		
	3	Furniture and equipment	Showcases, counters, chairs, tables, sofa, coffee table, flyer stand, LED walls, TV, AV equipment etc.		
	4	Lighting	All kinds of lighting in the stand and within showcases		
	5	Fascia and overhead signage	Overhead signage or branding, fascia, company logo on top of the stand structure		
	6	Rigged structure	Any rigged structure including lighting gantries or other structural elements		
	7	Ceiling	Any form of ceiling e.g. fabric ceilings, solid ceilings for lighting or stand support		
	8	Display facilities	Built-in or detachable product display cabinets, lightboxes etc.		
REUSED / RECYCLED	9	Floor covering	Carpet, floor tiles, HDF coverings, lino etc.		
	10	Graphics and decorative items	Stand graphics that are wall-mounted or floor-standing (not overhead) and any other decorative items such as plants and flowers, models and ornaments		

8. DISPLAY FACILITIES

Showcases (furniture with glass/plastic)

Display facilities (no glass/plastic)



8. DISPLAY FACILITIES

What counts as display facilities?



9. FLOOR COVERING



9. FLOOR COVERING



General Guidelines:

- Reuse (including donation) or recycling is acceptable as it's recognised that reuse can be challenging for soiled materials
- Floor covering includes carpet, tile, laminate etc. It does not include the floor substrate which is the platform and is under category 2
- We are looking for reuse and recycled NOT made from recycled materials – however we will accept downcycling also. So if carpet is used to wrap up furniture etc post event – this would also count as recycling and could help an exhibitor/contractor achieve a Gold rating.

	CATEGORY	ITEMS			
REUSED	1	Stand structure and walls	Structure or framework of the stand, walls, panels for meeting rooms, backdrop		
	2	Platform or raised flooring	Structure of flooring (excluding surface covering, e.g. carpet)		
	3	Furniture and equipment	Showcases, counters, chairs, tables, sofa, coffee table, flyer stand, LED walls, TV, AV equipment etc.		
	4	Lighting	All kinds of lighting in the stand and within showcases		
	5	Fascia and overhead signage	Overhead signage or branding, fascia, company logo on top of the stand structure		
	6	Rigged structure	Any rigged structure including lighting gantries or other structural elements		
	7	Ceiling	Any form of ceiling e.g. fabric ceilings, solid ceilings for lighting or stand support		
	8	Display facilities	Built-in or detachable product display cabinets, lightboxes etc.		
REUSED / RECYCLED	9	Floor covering	Carpet, floor tiles, HDF coverings, lino etc.		
	10	Graphics and decorative items	Stand graphics that are wall-mounted or floor-standing (not overhead) and any other decorative items such as plants and flowers, models and ornaments		

10. GRAPHICS AND DECORATION



10. GRAPHICS AND DECORATION



General Guidelines:

- Graphics include printed paper, PVC and fabric, such as fabric walls
- Decorative items include vases, display units, plants, props etc
- Reuse or recycling is acceptable as it's recognised that reuse can be challenging for printed materials

	CATEGORY	ITEMS			
REUSED	1	Stand structure and walls	Structure or framework of the stand, walls, panels for meeting rooms, backdrop		
	2	Platform or raised flooring	Structure of flooring (excluding surface covering, e.g. carpet)		
	3	Furniture and equipment	Showcases, counters, chairs, tables, sofa, coffee table, flyer stand, LED walls, TV, AV equipment etc.		
	4	Lighting	All kinds of lighting in the stand and within showcases		
	5	Fascia and overhead signage	Overhead signage or branding, fascia, company logo on top of the stand structure		
	6	Rigged structure	Any rigged structure including lighting gantries or other structural elements		
	7	Ceiling	Any form of ceiling e.g. fabric ceilings, solid ceilings for lighting or stand support		
	8	Display facilities	Built-in or detachable product display cabinets, lightboxes etc.		
REUSED / RECYCLED	9	Floor covering	Carpet, floor tiles, HDF coverings, lino etc.		
	10	Graphics and decorative items	Stand graphics that are wall-mounted or floor-standing (not overhead) and any other decorative items such as plants and flowers, models and ornaments		

10. GRAPHICS AND DECORATION

What counts as graphics?



10. GRAPHICS AND DECORATION

What counts as decoration?



PRE-EVENT ASSESSMENT GUIDELINES

1. STAND STRUCTURE AND WALLS



1. STAND STRUCTURE AND WALLING

Indicators for reuse:

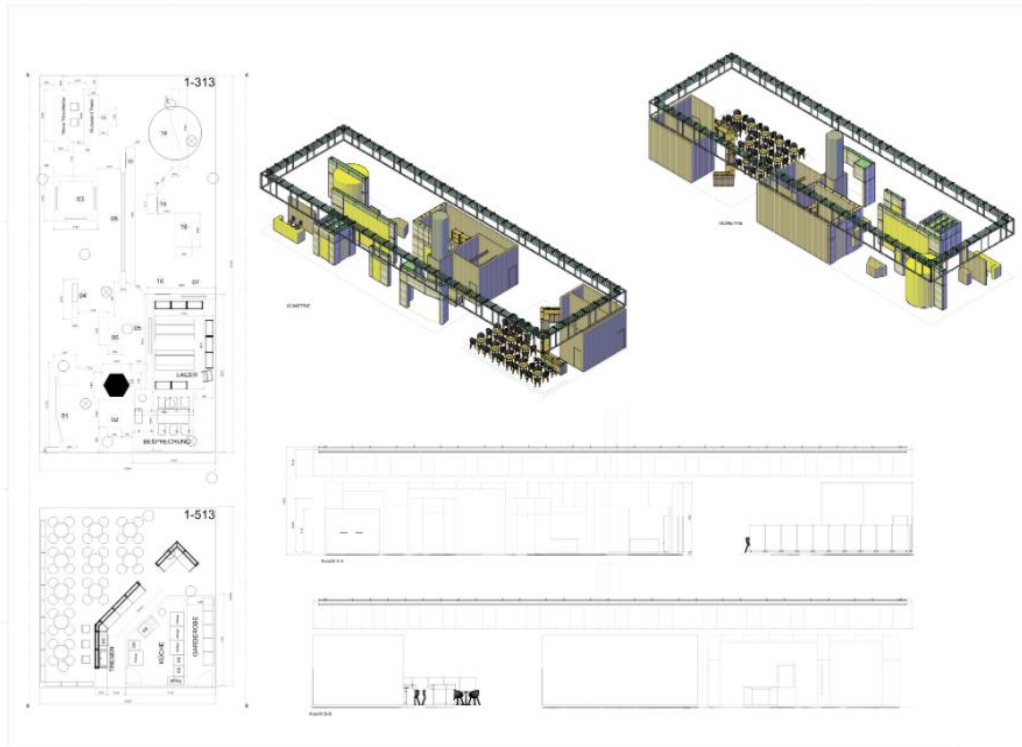
- Shell scheme style system
- Repurposed containers
- Modular aluminium system
- Standardisation in product dimensions
- Toolless disassembly
- Adjustability
- Robust material
- Standardised, multifunctional connection elements
- Other design choices which show that dismantling and reassembly was considered

Indicators for disposability:

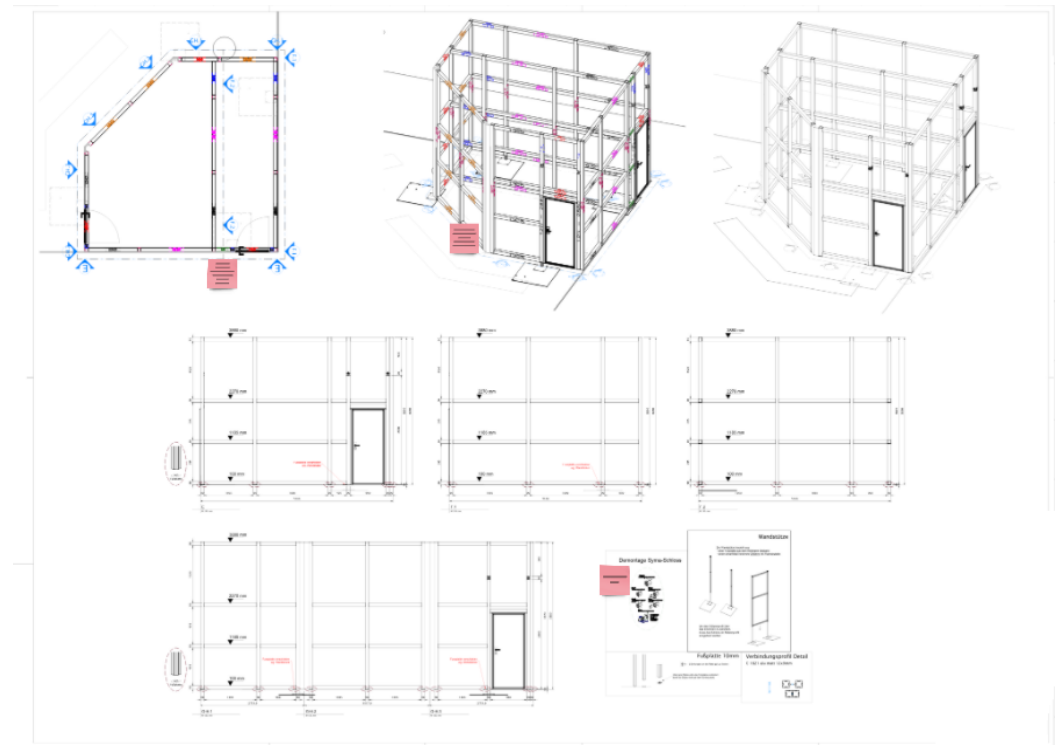
- Non-system
- Need for nails or screws
- Non-uniform product dimensions or no dimensions indicated
- No sign for modularity
- High degree in individualisation/ customisation
- Paint
- Wall mounted TV/ decoration/ exhibition pieces

1. STAND STRUCTURE AND WALLING

DOCUMENTS FOR REUSE



Complete construction plan



Construction plan cabin

1. STAND STRUCTURE AND WALLING

We'll accept all modular systems as reusable



2. PLATFORM AND RAISED FLOOR



2. PLATFORM AND RAISED FLOOR

Indicators for reuse:

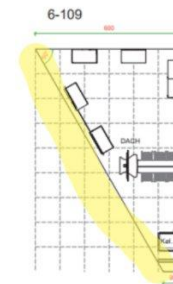
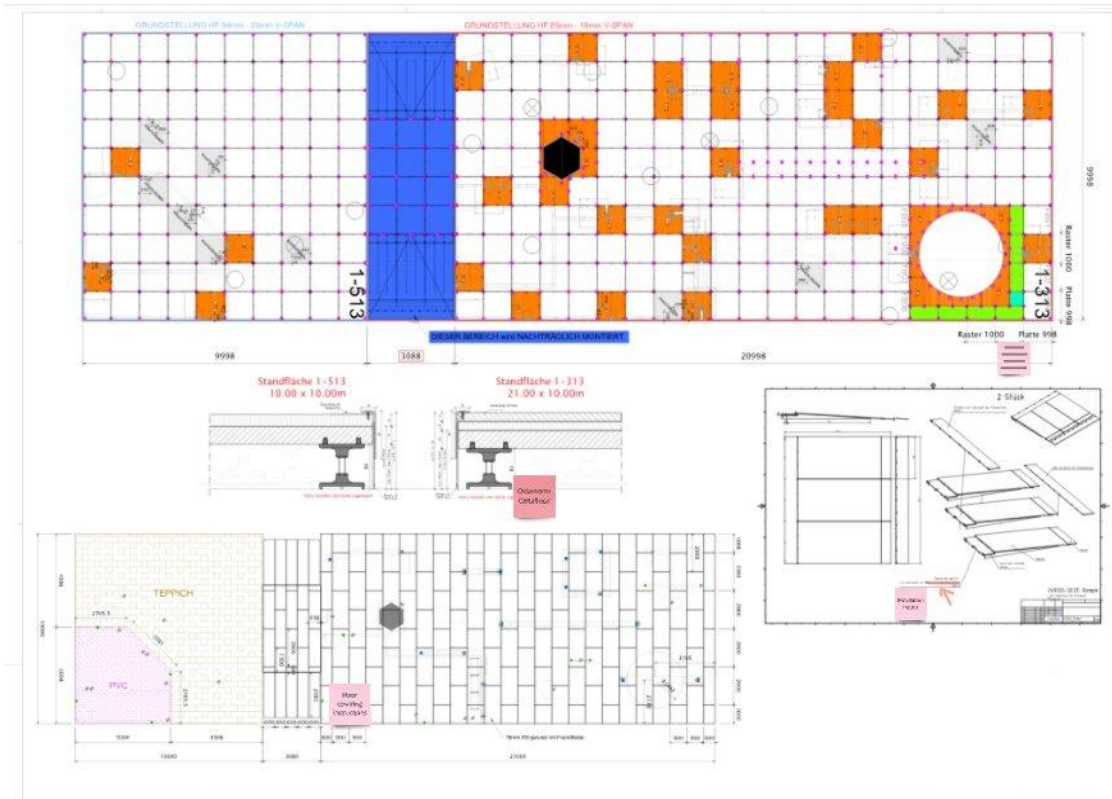
- Modular flooring
- Metal framed flooring
- Platform raisers
- Modular flooring components
- Adjustability
- Standardisation in platform panels dimensions
- Other design choices which show that dismantling and reassembly was considered

Indicators for disposability:

- Non-system
- Non-uniform dimensions or no dimensions indicated
- No sign for modularity
- Individualised flooring – e. g. due to wiring

2. PLATFORM AND RAISED FLOOR

DOCUMENTS FOR REUSE



Complete construction plans

2. PLATFORM AND RAISED FLOOR

PHOTOS FOR REUSE



2. PLATFORM AND RAISED FLOOR

We'll accept all modular systems as reusable



3. FURNITURE AND EQUIPMENT



3. FURNITURE AND EQUIPMENT

Indicators for reuse:

- Rental furniture
- Furniture sharing
- Dismantlability
- Stackability
- Delivery note
- Proof of storage
- Proof of maintenance
- Packaging material and other transport safety equipment and measurements
- Use of high quality, durable furniture

Indicators for disposability:

- High degree in individualisation/ customisation
- No proof of storage
- Non-stock furniture/ items
- Cheap furniture

3. FURNITURE AND EQUIPMENT

DOCUMENTS/ PHOTOS FOR REUSE

Service Partner:
Messe München
NürnbergMesse

HUMMEL
Mietmöbel

Hummel Möbelverleih GmbH
Gruber Straße 70 - 85586 Paing bei München
Phone: +49 (0) 89 901 087 50
Fax: +49 (0) 89 901 087 599
info@hummel-mietmoebel.de

Büro und Lager Nürnberg:
Breitauer Straße 330 - 90471 Nürnberg
Phone: +49 (0) 911 86 066 303
Fax: +49 (0) 911 86 066 304
nuernberg@hummel-mietmoebel.de

Auftragsbestätigung / Confirmation of Order

Vermietung / Condition	Halle / Hall	Stand / Stand	№ / No.	Datum / Date
	1	313 + 513	537806/S1984/N AK	27.02.2024

Vermietungszeitraum / Rentalperiod: 19.03.2024 - 22.03.2024
Lieferung / Delivery: 16.03.2024
Ihre Auftragsnummer: BE-458793-138028 / 249126
Aussteller: GEZE

Pos. / Pos.	Menge / Quantity	Artikel / Item	Art. Nr. / Item No.	Stanzpreis € / Unit price €	Mikropreis € / Microprice €
10	1	DIVO 180/80, Sitzsch, weiß Breite x Tiefe x Höhe in cm: 180 x 80 x 74	420803		
20	6	VITRA.03, Stuhl, schwarz Breite x Tiefe x Höhe in cm: 43 x 52 x 79 Sitzhöhe in cm: 45	113100		
30	1	PRINCIPESSA, Stiegharderobe, Chrom Breite x Tiefe x Höhe in cm: 0 x 0 x 170 Durchmesser in cm: 30	K04152		
40	2	MILANO, Konfektionsständer, Chrom Breite x Tiefe x Höhe in cm: 180 x 55 x 140 - 180	770200		
50	7	HEAVY, Schwerlastregal, silber-verzinkt Breite x Tiefe x Höhe in cm: 90 x 40 x 200	552900		
60	10	TIGO CLUB, Barhocker, Ecopelle weiß Breite x Tiefe x Höhe in cm: 45 x 53 x 99 Sitzhöhe in cm: 76	K06217		
70	10	STYLUS, Sitztisch, Ø 79 cm weiß Breite x Tiefe x Höhe in cm: 0 x 0 x 74 Durchmesser in cm: 79	424902		

Vielen Dank für Ihren Auftrag. Die Anlieferung erfolgt auf Abruf bzw. nach Vereinbarung an Ihren Stand. Der Auftrag ist verbindlich. Änderungen können nur bis 10 Tage vor Beginn der Veranstaltung entgegen-
genommen werden. Es gelten unsere Mietbedingungen:
<https://www.hummel-mietmoebel.de/page/>



Rental contracts

Photographical evidence from the past

3. FURNITURE AND EQUIPMENT

PHOTOS FOR REUSE



Photographical evidence from your warehouse

4. LIGHTING



4. LIGHTING

Indicators for reuse:

- Rental or shared
- Delivery note
- Proof of storage
- Proof of maintenance
- Safety check protocol
- Packaging material and other transport safety equipment and measurements
- Expensive lighting systems (due to its price and long lifespan we expect LEDs to be reused)
- Modular lighting systems
- Standardised connections

Indicators for disposability:

- Cheap light strips
- No proof of storage
- Non-stock lighting
- Self-adhesive LED strip

4. LIGHTING

DOCUMENTS/ PHOTOS FOR REUSE

ProShop Europe Rental

Ordrebekræftelse

Side: 1 / 1

Blagnr.: 03624

Blagdato: 13/01/2025

Faktureres til kundens nr.: 86948233

Bill to VAT No.: DK20294582

Reference: Rasmus Vosen

Ekstern bilag nr.: 12/02/2025

Forfalds dato: Netto 30 dage

Betalingsbetingelser: Job: 25-0024

Sælger: Thomas Kjærsgård

Holtmann

Holtmann GmbH & Co. KG | Adam-Stephans-Str. 8-10 | 30905 Langenhagen

Nummer	Beskrivelse	Antal	Enhedspris	Beløb
	Arrangement: Biofach 2025			
	Afhentning d. 4/2 2025			
	Retur d. 18-19/2 2025			
	Messe Dato: 11-14/2 2025			
	Logo Af File:			
101	Ramme 1	23		
	F-33 Truss efter pakke-liste	1		
	Ø14 clamp-rør, spacer 4 cm, 30,5cm samt 17cm.			
101	Ramme 2	60		
	F-33 Truss efter pakke-liste			
	Ramme 3			
	F-33 Truss efter pakke-liste	138		
	Lampes kabler mm.			
102	Studepar 150W/ CDM	75		
100	Filter rammer	75		
100	Safety Wire (lyske-wire)	75		
100	kabler (75 x 1,5m & 25 x 5-m Schuko)	1		
100	32 truss Slag (Softsteel) 1 meter (2x), 32 stk. Shackler,			
	Adtl halfcoupler, 2x5m alu pipe.			
ADM	Administrationsgebyr	1		

Lighting is rented as part of the rigging

I alt DKK ekskl. moms

Moms

I alt DKK inkl. moms

For alle priser og afbøjer gælder vores udsalgsbetingelser - www.proshopeurope.com/betingelser.
 Accept af betingelser og bekræftelse af ordre bedes underskrevet og returneret i mail eller post.

Dato: _____ Underskrift & stempel: _____
 Med venlig hilsen
 Proshop Europe A/S

PROSHOP EUROPE A/S Langflysøen 3 8200 Aarhus N Danmark	SZ/CVR-nr. DK35250557 Email office@proshopeurope.com Hjemmeside www.proshopeurope.com Telefonnr. +45 70252586	Bank Kontonr. 7110 0001377175 SWIFT SYBKDK22 IBAN DK2771100001377175	Syetbank A/S 7110 0001377175 SYBKDK22 DK2771100001377175
---	--	--	---



Verdelliste/Nr.501-249126-252696

Holtmann GmbH & Co. KG | Adam-Stephans-Str. 8-10 | 30905 Langenhagen

Projektnummer: 249126

Projekt titel: Elektro-Ausstattung HME

Veranstaltung: fensterbau frontale 2024

Veranstaltungsort: Nürnberg

Dispo Anfang: 05.03.2024

Dispo Ende: 04.04.2024

Halle: 1

Stand: 313

Projektleder: Krause

Erstellt durch: mkr

Verleadedatum: 05.03.2024

Datum: 04.03.2024

HOLTMANN+

Beschreibung: ELT-Zusatz

lfd.Nr.	Pos-Nr.	Vk-Kd.Text	ArtikelNr	Bezeichnung	Farbe	Menge	Einheit	EK-Status	Bemerkungen
1	01.04.10		05.01.0216	Verteilung bis 60KW mit Zähler, Version 2018		1,00	Stück	- - -	
				mit Adapter auf 63A, gleich montieren!!!!					
				Verleadenummer: 501 \ Verleadedatus: neu					
2	1		05.03.0232	Wielandkabel Spolig 2,5° 5m		4,00	Stück	- - -	
				Verleadenummer: 501 \ Verleadedatus: neu					
3	2		05.03.0233	Wielandkabel Spolig 2,5° 10m		4,00	Stück	- - -	
				Verleadenummer: 501 \ Verleadedatus: neu					
4	3		05.03.0234	Wielandkabel Spolig 2,5° 20m		2,00	Stück	- - -	
				Verleadenummer: 501 \ Verleadedatus: neu					
5	5		05.10.0112	Adapter Wieland Spolig 2,5° Stecker - CEE 16A Kupplung		4,00	Stück	- - -	
				Verleadenummer: 501 \ Verleadedatus: neu					
6	8		05.01.0207	Wieland Verteilerbox WVB 5 AC 20A 250/400V		4,00	Stück	- - -	
				Verleadenummer: 501 \ Verleadedatus: neu					
7	9		05.20.0001	umgebaute Hängelampen		10,00	Stück	- - -	
				Verleadenummer: 501 \ Verleadedatus: neu					

Rental contracts

Packaging evidence

Shipping lists or delivery notes

5. FASCIA AND OVERHEAD SIGNAGE



5. FASCIA AND OVERHEAD SIGNAGE

Indicators for reuse:

- Signage is provided by the exhibitor (e-mail history)
- Proof of storage
- Packaging material
- Delivery note
- Digital signage
- Hanging Elements instead of screwed down

Indicators for disposability:

- If there is new wood being used, this can often mean that the material may be used only once, but it may be new stand and will be re-used, so clarify whether this is the case with the Project Manager/Foreman of the stand / during dismantle.

5. FASCIA AND OVERHEAD SIGNAGE

DOCUMENTS/ PHOTOS FOR REUSE



Storage evidence

6. RIGGED STRUCTURE



6. RIGGED STRUCTURE

Indicators for reuse:

- Modular rigging systems
- Aluminium profile
- Variable length
- Standardised connection elements
- Rented structures

6. RIGGED STRUCTURE

DOCUMENTS/ PHOTOS FOR REUSE

btl

Holtmann GmbH & Co.KG
Büro Nürnberg
Beuthener Str. 43
90471 Nürnberg
Deutschland

Kontakt: Torsten Albe
Telefon: +49-511-866996-15
Telefax: +49-511-866996-29
E-Mail: torsten.albe@btlx.de

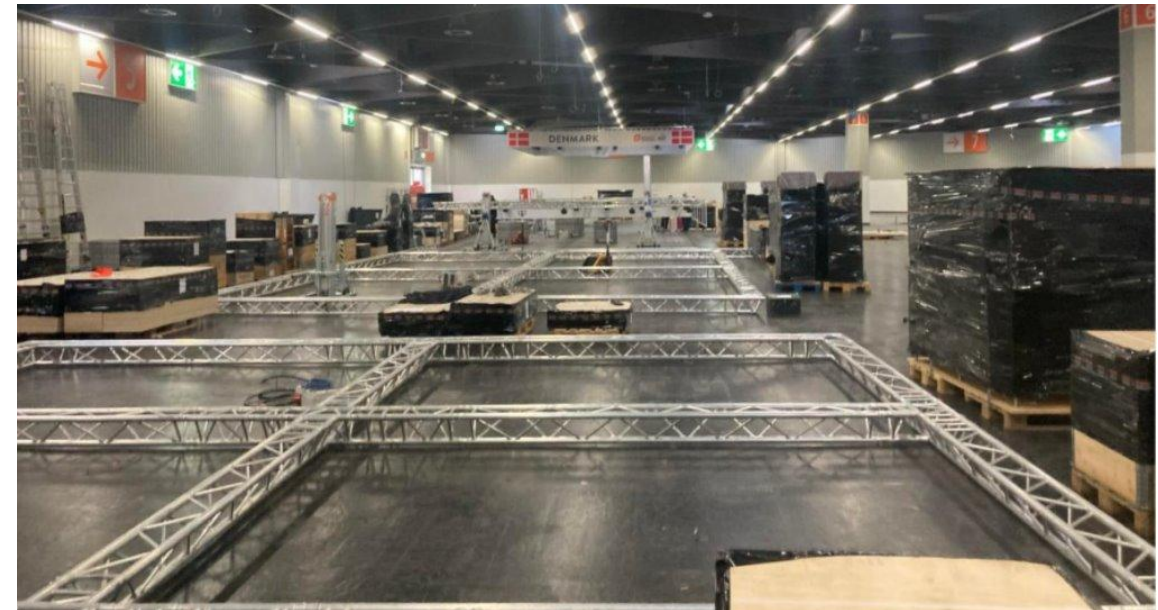
ANGEBOT 23-4125 14.01.2024

Sehr geehrte Damen und Herren,
vielen Dank für Ihre Anfrage. Wir freuen uns Ihnen nachfolgendes Angebot unterbreiten zu können.

Pos.	Anzahl	Bezeichnung	Summe
HOLTSMANN - FENSTERBAU 2024 TBA GIEZE 23-4125.02			
Lieferadresse: Nürnberg Messe GmbH CCN CongressCenter Nürnberg, Messezentrum 1, 90471 Nürnberg			
Montage Traverse und Beleuchtung: 14.03.2024 - 09:00 Uhr bis 19:00 Uhr			
Veranstaltung: 19.03.2024 - 08:00 Uhr bis 22.03.2024 - 18:00 Uhr			
Demontage: 25.03.2024 - 09:00 Uhr bis 19:00 Uhr			
Traverse und Beleuchtung:			
Traverse			
1	2	Eurotruss FD34, schwarz, 2-Wege Ecke, 90°, FD34-L90	€
2	8	Eurotruss FD34, schwarz, 3-Wege Ecke, T-Glied, FD34-T	€
3	173	8m Eurotruss FD34, schwarz	€
			Zwischensumme Traverse: €
Rigging			
4	5	Genie ST25 Superower mit Gabel	€
			Zwischensumme Rigging: €

101, Hess Osthof, Buchener Str. 89, 40472 Düsseldorf
Telefon: 0211 90449-0, Fax: 0211 90449-10
Handelsregister: Amtsgericht Düsseldorf, USt-IdNr.: DE 352458488
Bank: Commerzbank AG, BIC: COBA33HAN, IBAN: DE 18 2504 0000 0120 3178 00

Düsseldorf München Berlin Frankfurt a. M. Hannover Poznań Seite 1 von 4



Rental contracts

We'll accept all aluminium systems as reusable

7. CEILING



7. CEILING

Indicators for reuse:

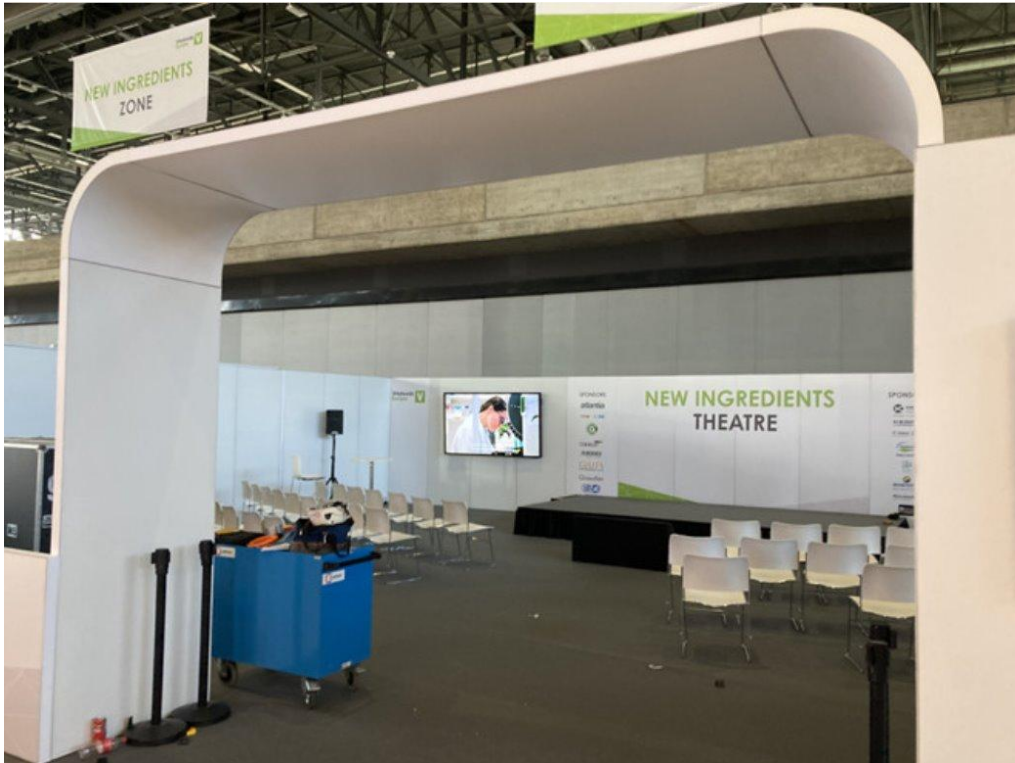
- Coffered ceiling
- Ceiling system (e. g. Odenwald)

Indicators for disposability:

- Cotton square gauze
- Chipboard

7. CEILING

We'll accept all modular systems as reusable



8. DISPLAY FACILITIES



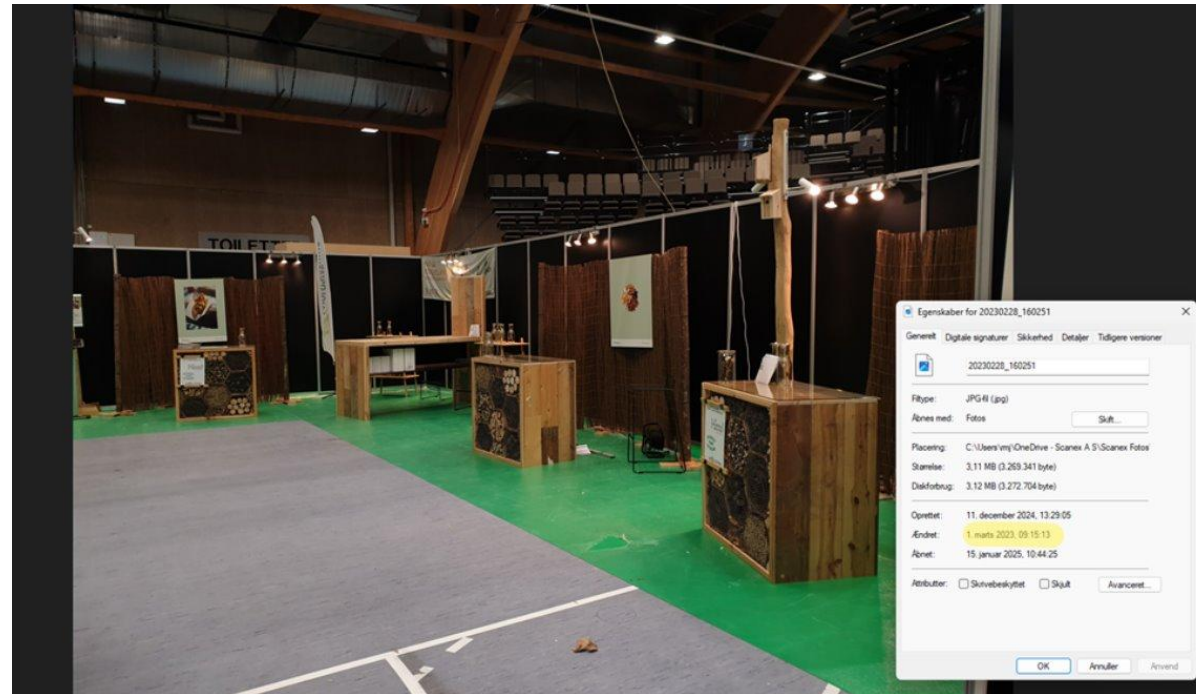
8. DISPLAY FACILITIES

Indicators for reuse:

- Digital displays are used on which content can be flexibly customised.
- Rental display facilities
- Stock display facilities/ inventory list
- Modular display facilities

8. DISPLAY FACILITIES

DOCUMENTS/ PHOTOS FOR REUSE



Photographical evidence from the past

9. FLOOR COVERING



9. FLOOR COVERING

Indicators for reuse:

- (Wear resistant) Carpet tiles
- Durable hard flooring (like vinyl or linoleum)
- Procedural instructions for cleaning and maintaining floor covering

Indicators for recyclability:

- The manufacturer or supplier guarantees the return to recycling system
- Established take-back recycling system
- Unmixed material

Indicators for disposability:

- Adhesive bonding (other than double-sided carpet tape)
- Flooring Rolls

10. GRAPHICS AND DECORATION



10. GRAPHICS AND DECORATION

DECORATION

Indicators for reuse:

- Rental decoration
- Decoration sharing
- Dismantlability
- Stackability
- Delivery note
- Proof of storage
- Proof of maintenance
- Packaging material and other transport safety equipment and measurements
- Use of high quality, durable decoration

Indicators for disposability:

- No instructions on installation (will probably be screwed down or stapled)

10. GRAPHICS AND DECORATION

GRAPHICS

Indicators for reuse:

- Digital Graphics

Indicators for recyclability:

- The manufacturer or supplier guarantees the return to recycling system
- Established take-back recycling system
- Unmixed material

Indicators for disposability:

- Displaying date/ year
- Displaying show name

ONSITE ASSESSMENT GUIDELINES

1. STAND STRUCTURE AND WALLS



1. STAND STRUCTURE AND WALLING

Indicators for reuse:

- Shell scheme style system
- Repurposed containers
- Modular aluminium system
- Standardisation in product dimensions
- Toolless disassembly
- Adjustability
- Robust material
- Standardised, multifunctional connection elements
- Other design choices which show that dismantling and reassembly was considered

Indicators for disposability:

- Non-system
- Need for nails or screws
- Non-uniform product dimensions or no dimensions indicated
- No sign for modularity
- High degree in individualisation/ customisation
- Paint
- Wall mounted TV/ decoration/ exhibition pieces

1. STAND STRUCTURE AND WALLING

INDICATORS OF REUSE – WOODEN WALLS CLUES



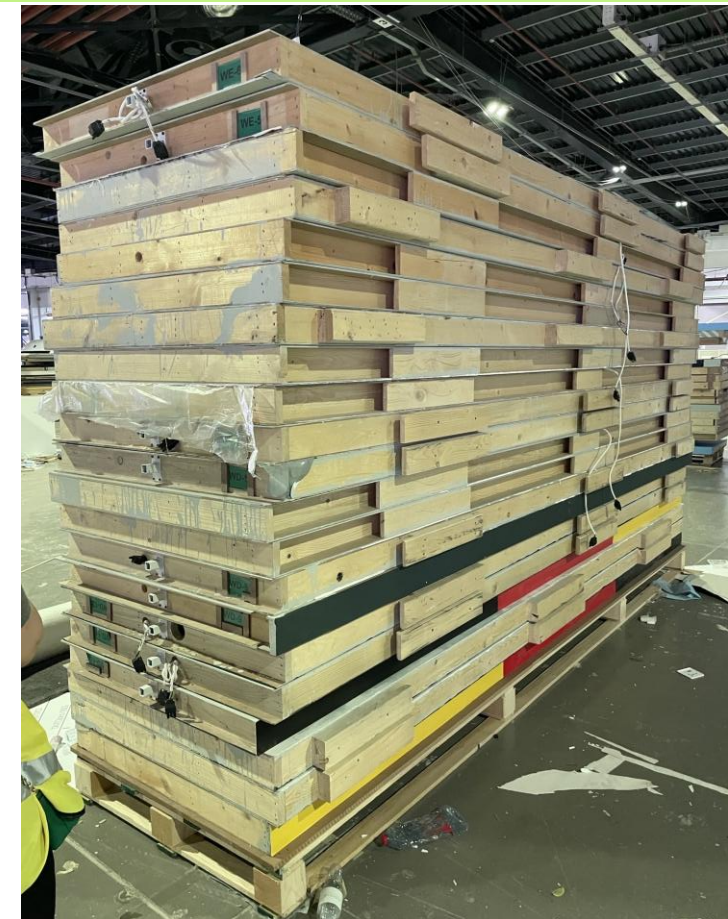
Stock panels with sheets on both sides and access ports for fixings



Evidence of reused painted panels or stock panels



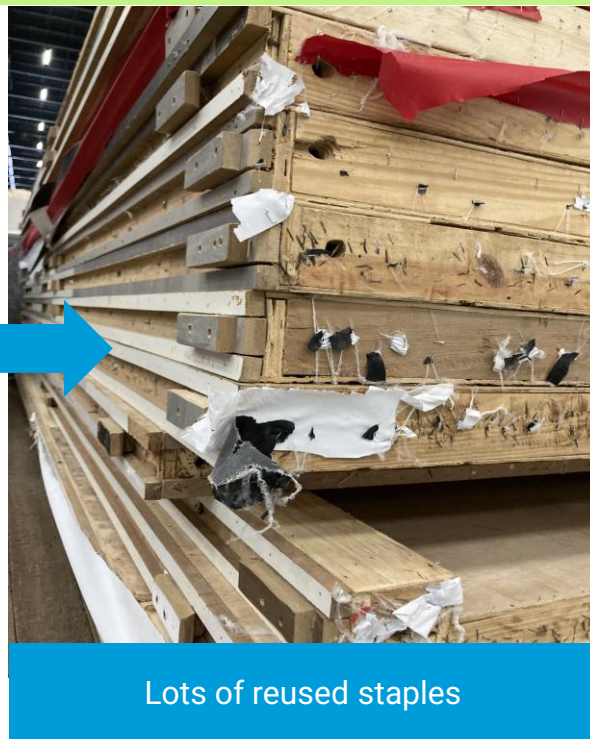
Panels with former exhibitor names or numbering



Stock panels with sheets and wooden grooves to lock in down the side

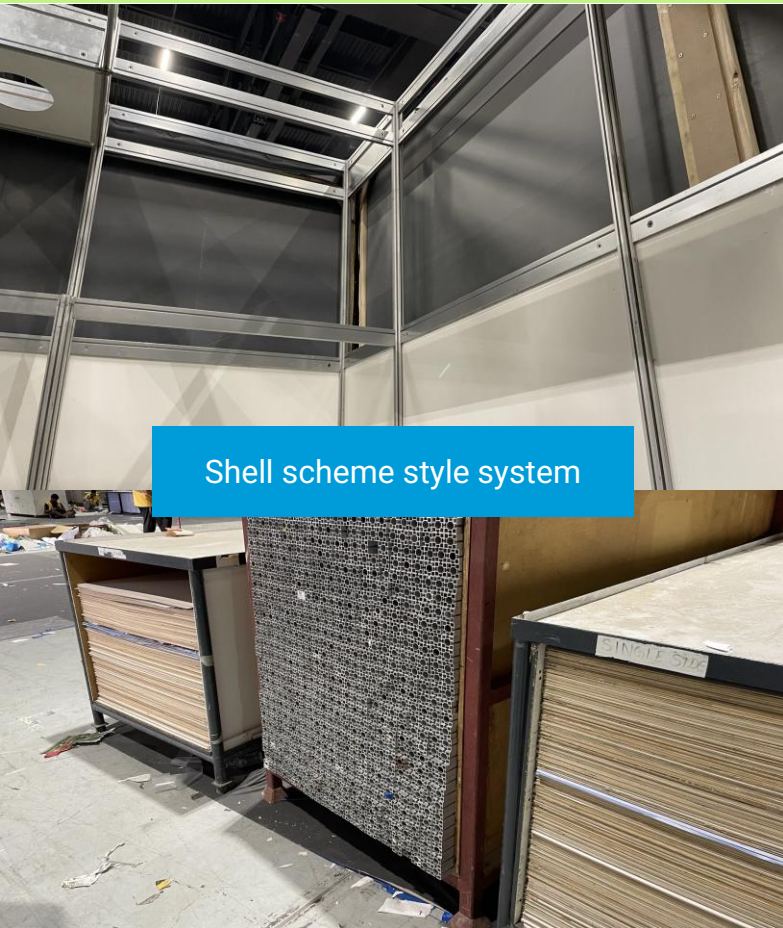
1. STAND STRUCTURE AND WALLING

INDICATORS OF REUSE – WOODEN WALLS FASTENINGS

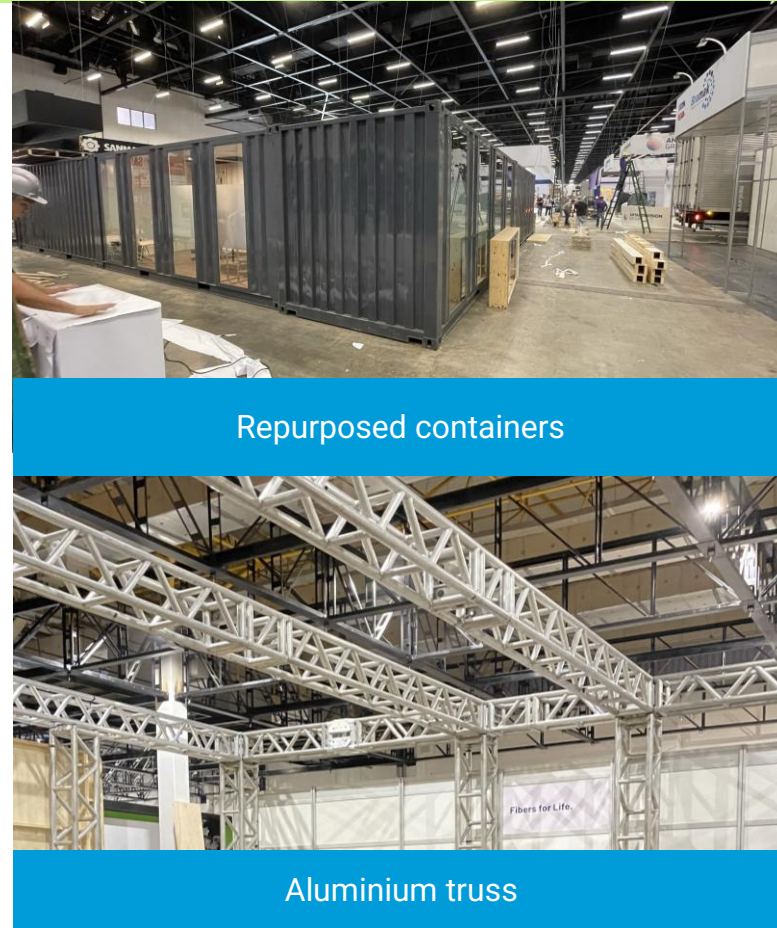


1. STAND STRUCTURE AND WALLING

INDICATORS OF REUSE – METAL SYSTEMS



Shell scheme style system



Repurposed containers



Modular aluminium system



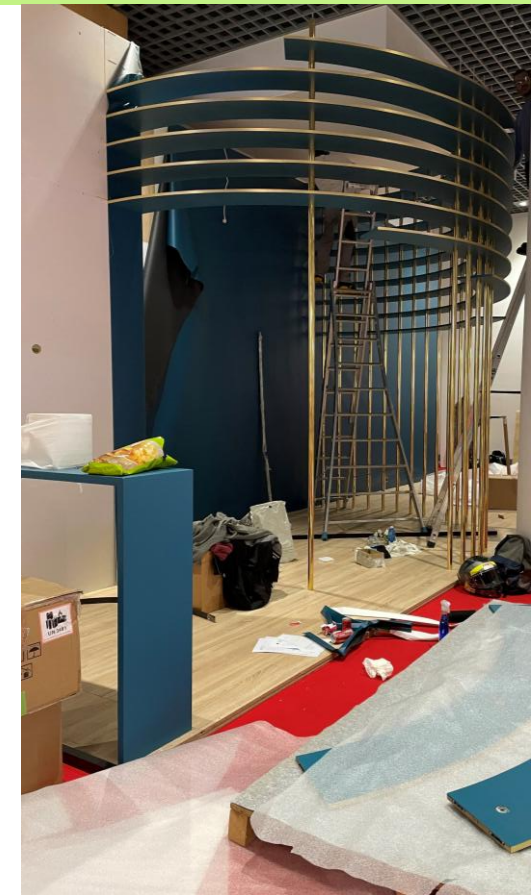
Aluminium truss



Visible aluminium seams

1. STAND STRUCTURE AND WALLING

INDICATORS OF REUSE – GLASS AND PLASTIC SYSTEMS



1. STAND STRUCTURE AND WALLING

INDICATORS OF DISPOSABILITY

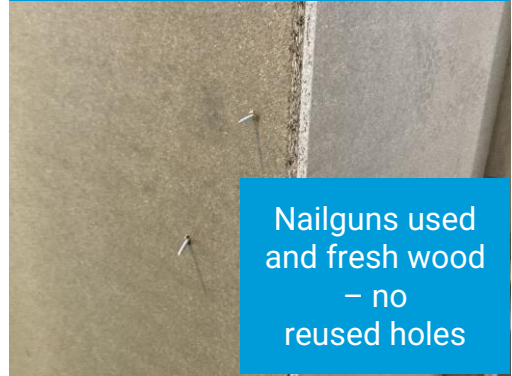


Inconsiderate stacking on pallets or trucks



Destructed onsite

Fresh wood – no old holes.
Could be first time use, or single
use – check during dismantle



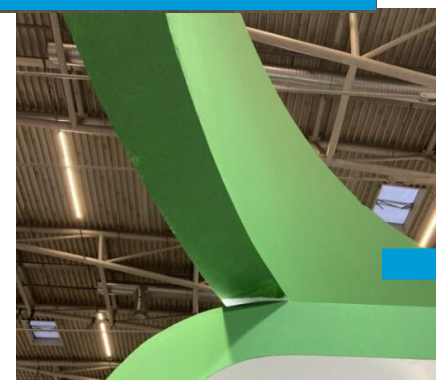
Nailguns used
and fresh wood
– no
reused holes



Chipboard is comparatively cheap and
not easily reused



Rough demolition



Rushed paint job



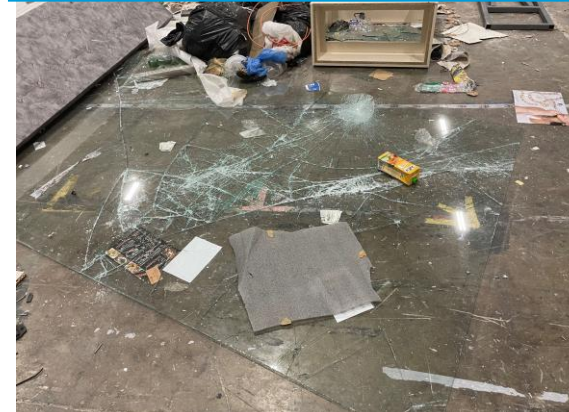
1. STAND STRUCTURE AND WALLING

INDICATORS OF DISPOSABILITY

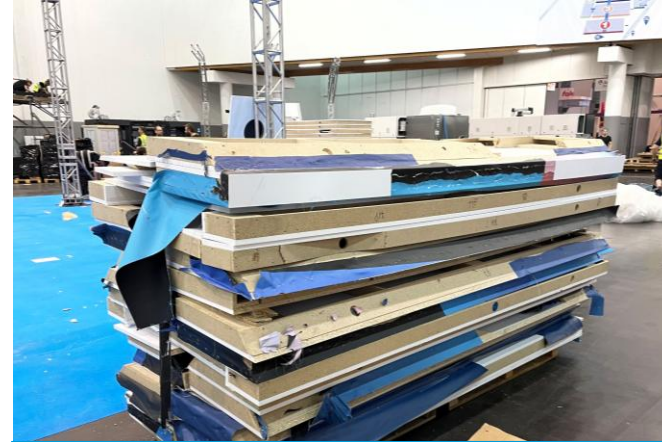
Wall elements ripped apart



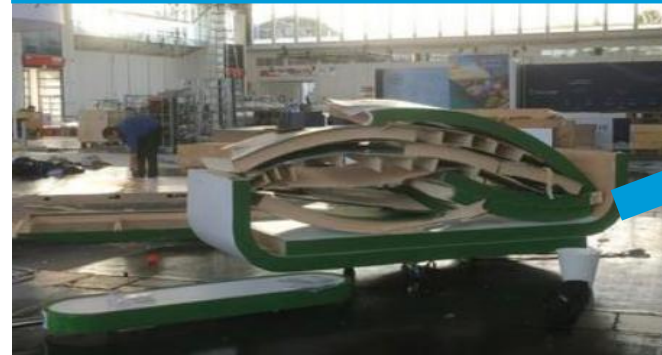
Crowbar used for forced break



Smashed glass



Walls dismantled with signage still on, edges broken (can't be put back together)



2. PLATFORM AND RAISED FLOOR



2. PLATFORM AND RAISED FLOOR

Indicators for reuse:

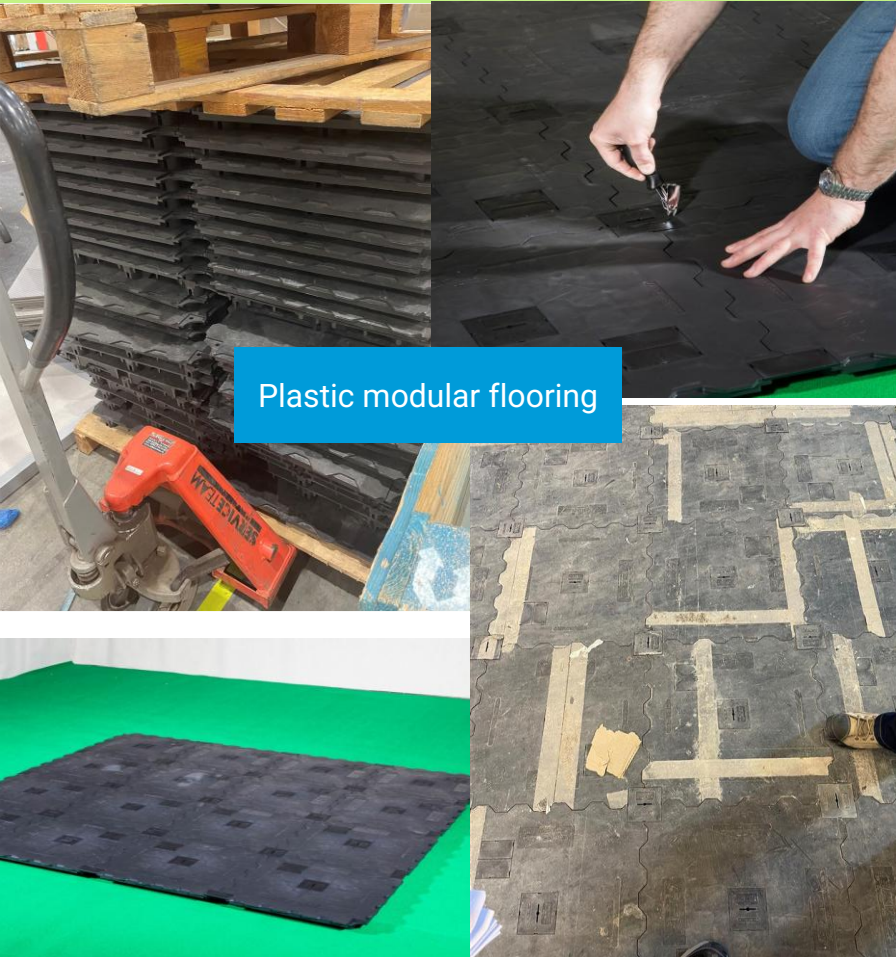
- Modular flooring
- Metal framed flooring
- Platform raisers
- Modular flooring components
- Adjustability
- Standardisation in platform panels dimensions
- Other design choices which show that dismantling and reassembly was considered

Indicators for disposability:

- Non-system
- Non-uniform dimensions or no dimensions indicated
- No sign for modularity
- Individualised flooring – e. g. due to wiring

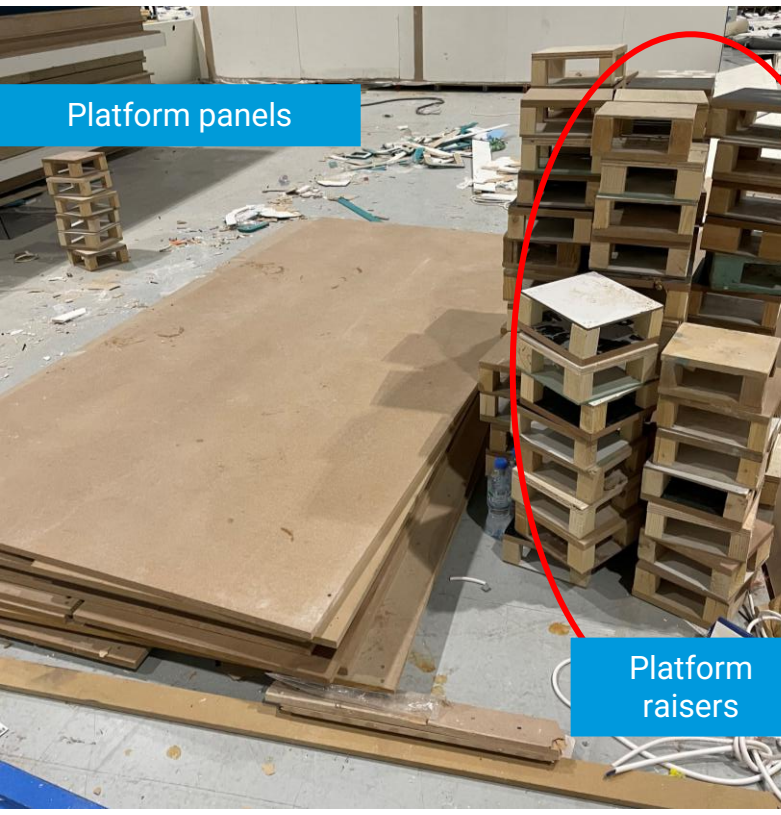
2. PLATFORM AND RAISED FLOOR

INDICATORS OF REUSE



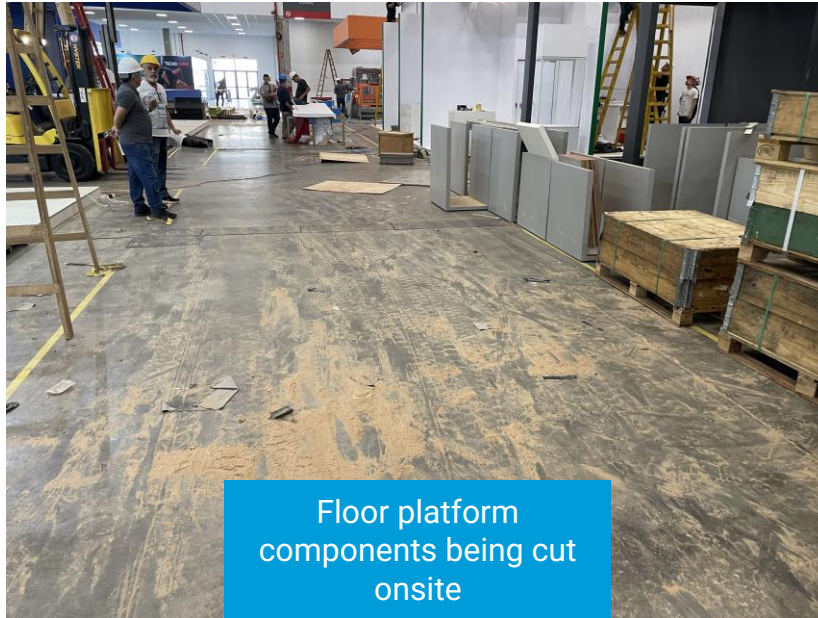
2. PLATFORM AND RAISED FLOOR

INDICATORS OF REUSE

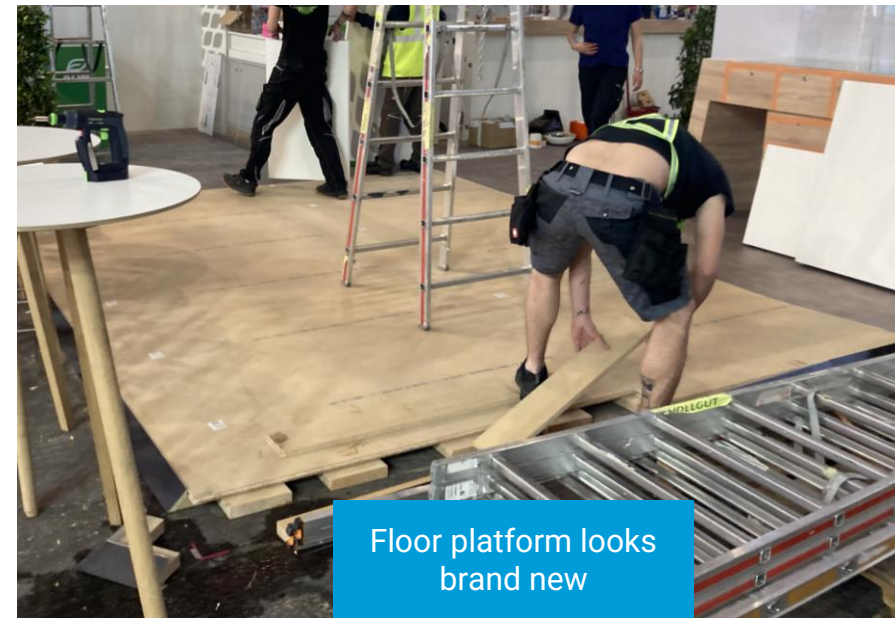


2. PLATFORM AND RAISED FLOOR

INDICATORS OF DISPOSABILITY



Floor platform components being cut onsite



Floor platform looks brand new

These two indicators alone do not necessarily mean the platform is being disposed of, but would warrant you going back to check during dismantle. If there is new wood being used, this can often mean that the material may be used only once, so clarify whether this is the case with the Project Manager/Foreman of the stand.

3. FURNITURE AND EQUIPMENT



3. FURNITURE AND EQUIPMENT

Indicators for reuse:

- Rental furniture
- Furniture sharing
- Dismantlability
- Stackability
- Delivery note
- Proof of storage
- Proof of maintenance
- Packaging material and other transport safety equipment and measurements
- Use of high quality, durable furniture

Indicators for disposability:

- High degree in individualisation/ customisation
- No proof of storage
- Non-stock furniture/ items
- Cheap furniture

3. FURNITURE AND EQUIPMENT

INDICATORS OF REUSE



Furniture wrapped post show



Event or venue led donation programme



'Standard look' rental furniture



Furniture carefully dismantled



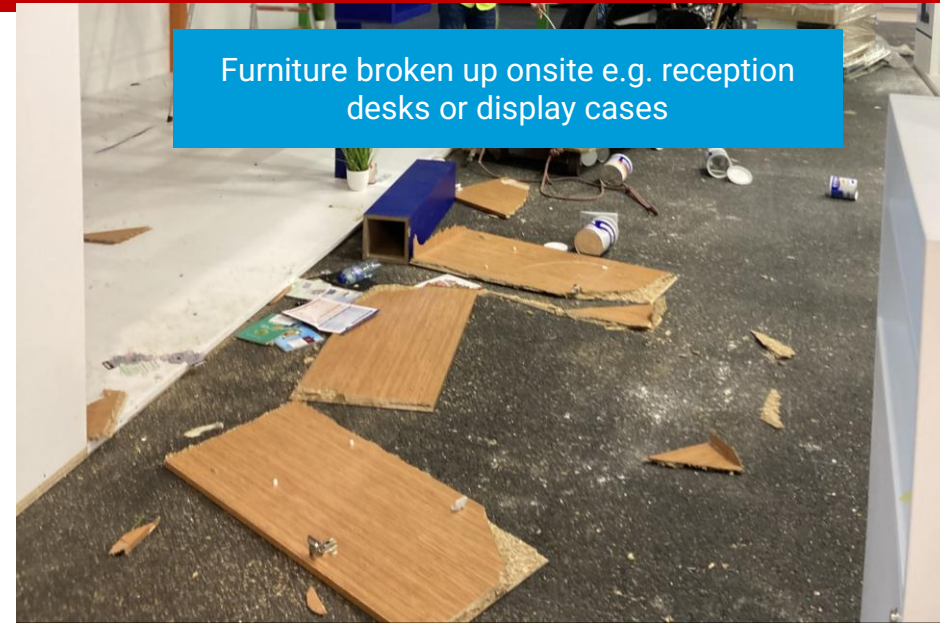
'Standard look' rental furniture painted to match show colours – check with the project manager/foreman to be sure

3. FURNITURE AND EQUIPMENT

INDICATORS OF DISPOSABILITY



Abandoned furniture



Furniture broken up onsite e.g. reception desks or display cases

Broken or damaged furniture

Furniture in trash

North America specific: Exhibitors will sometimes purchase cheap furniture from Wayfair/IKEA that they will then leave on the show floor, so keep an eye out for this at the dismantle.

4. LIGHTING



4. LIGHTING

Indicators for reuse:

- Rental or shared
- Delivery note
- Proof of storage
- Proof of maintenance
- Safety check protocol
- Packaging material and other transport safety equipment and measurements
- Expensive lighting systems (due to its price and long lifespan we expect LEDs to be reused)
- Modular lighting systems
- Standardised connections

Indicators for disposability:

- Cheap light strips
- No proof of storage
- Non-stock lighting
- Self-adhesive LED strip

4. LIGHTING

INDICATORS OF REUSE



Expensive components



Modular components

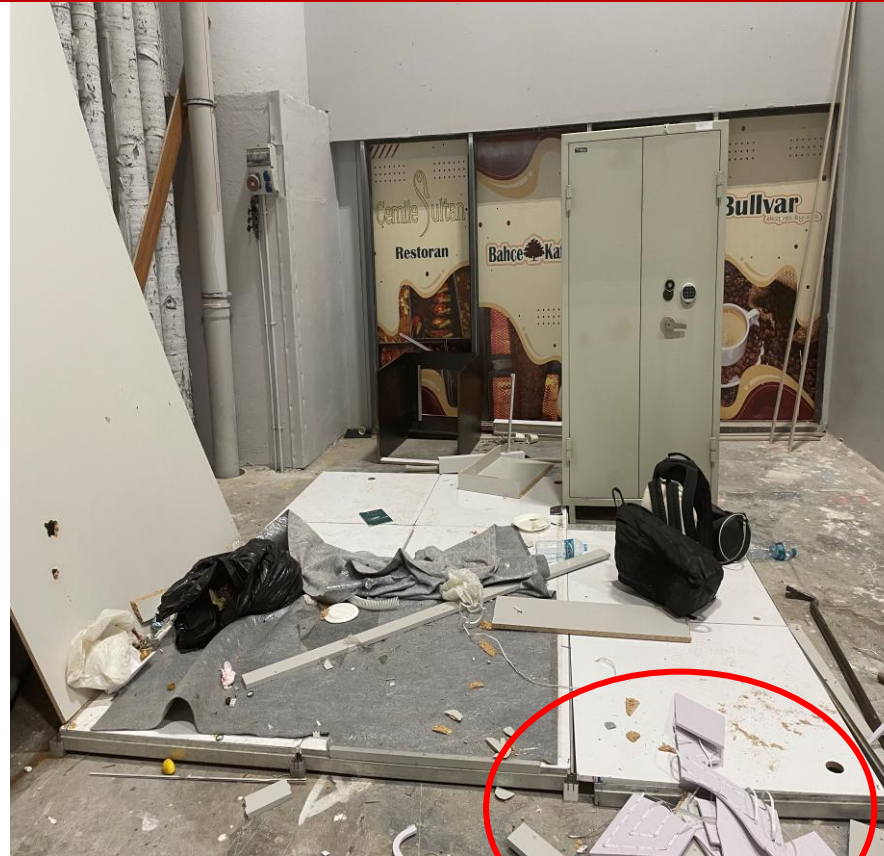


4. LIGHTING

INDICATORS OF DISPOSABILITY

Poor packing

Lighting in the trash



Destructive removal

5. FASCIA AND OVERHEAD SIGNAGE



5. FASCIA AND OVERHEAD SIGNAGE

Indicators for reuse:

- Signage is provided by the exhibitor (e-mail history)
- Proof of storage
- Packaging material
- Delivery note
- Digital signage
- Hanging Elements instead of screwed down

Indicators for disposability:

- If there is new wood being used, this can often mean that the material may be used only once, but it may be new stand and will be re-used, so clarify whether this is the case with the Project Manager/Foreman of the stand / during dismantle.

5. FASCIA AND OVERHEAD SIGNAGE

INDICATORS OF REUSE

Neatly stored



Carefully handled during the dismantle



5. FASCIA AND OVERHEAD SIGNAGE

INDICATORS OF DISPOSABILITY



Trashed



New clean wood

If there is new wood being used, this can often mean that the material may be used only once, but it may be new stand and will be re-used, so clarify whether this is the case with the Project Manager/Foreman of the stand / during dismantle.



6. RIGGED STRUCTURE



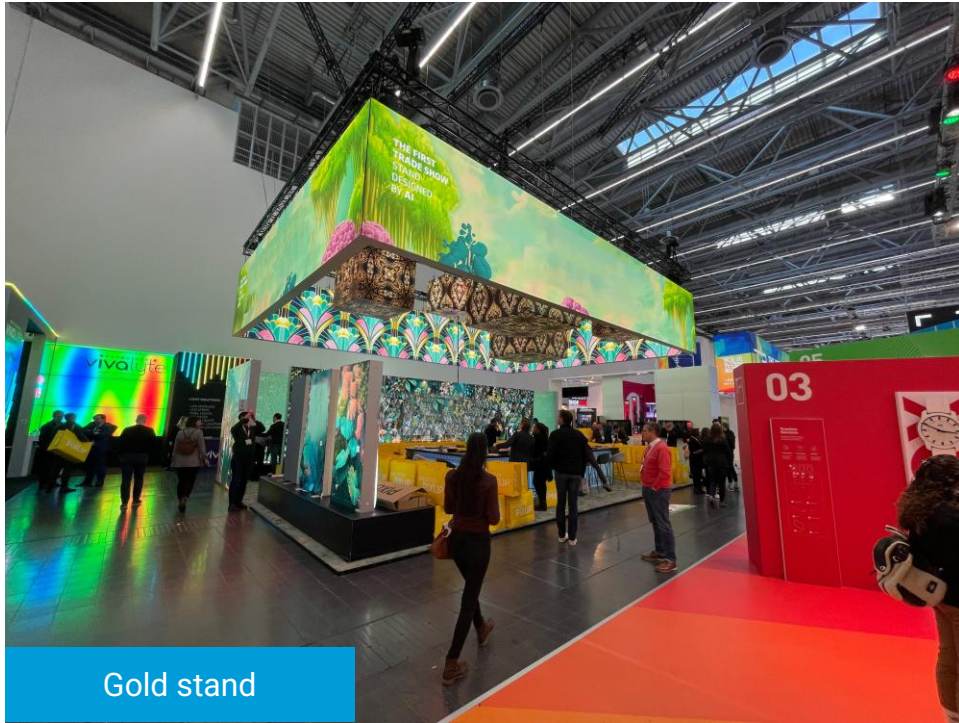
6. RIGGED STRUCTURE

Indicators for reuse:

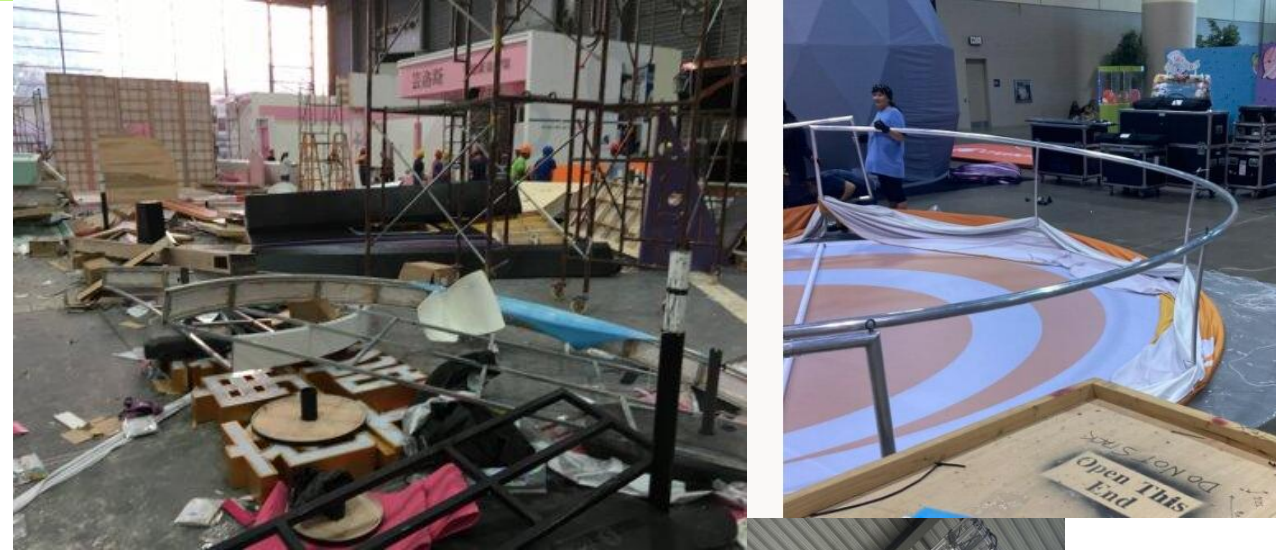
- Modular rigging systems
- Aluminium profile
- Variable length
- Standardised connection elements
- Rented structures

6. RIGGED STRUCTURE

INDICATORS OF REUSE



INDICATORS OF DISPOSABILITY



7. CEILING



7. CEILING

Indicators for reuse:

- Coffered ceiling
- Ceiling system (e. g. Odenwald)

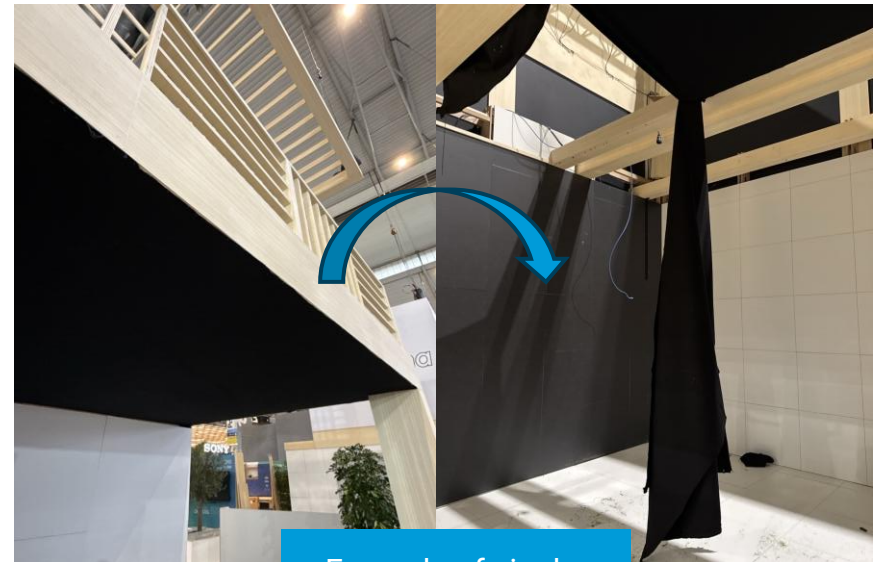
Indicators for disposability:

- Cotton square gauze
- Chipboard

7. CEILING

INDICATORS OF REUSE

INDICATORS OF DISPOSABILITY



8. DISPLAY FACILITIES



8. DISPLAY FACILITIES

Indicators for reuse:

- Digital displays are used on which content can be flexibly customised.
- Rental display facilities
- Stock display facilities/ inventory list
- Modular display facilities

8. DISPLAY FACILITIES

INDICATORS OF REUSE



INDICATORS OF DISPOSABILITY



9. FLOOR COVERING



9. FLOOR COVERING

Indicators for reuse:

- (Wear resistant) Carpet tiles
- Durable hard flooring (like vinyl or linoleum)
- Procedural instructions for cleaning and maintaining floor covering

Indicators for recyclability:

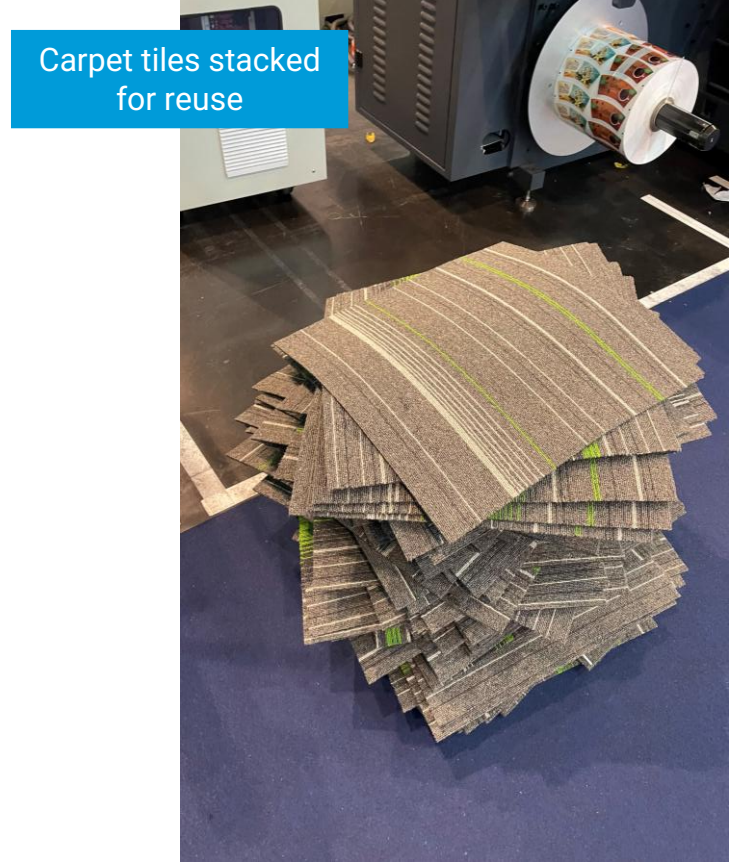
- The manufacturer or supplier guarantees the return to recycling system
- Established take-back recycling system
- Unmixed material

Indicators for disposability:

- Adhesive bonding (other than double-sided carpet tape)
- Flooring Rolls

9. FLOOR COVERING

INDICATORS OF REUSE



9. FLOOR COVERING

INDICATORS OF DISPOSABILITY



Using a wrapping/padding is downcycling but could be recycled after. [Tricky!]



Heavily damaged and soiled flooring



10. GRAPHICS AND DECORATION



10. GRAPHICS AND DECORATION

DECORATION

Indicators for reuse:

- Rental decoration
- Decoration sharing
- Dismantlability
- Stackability
- Delivery note
- Proof of storage
- Proof of maintenance
- Packaging material and other transport safety equipment and measurements
- Use of high quality, durable decoration

Indicators for disposability:

- No instructions on installation (will probably be screwed down or stapled)

10. GRAPHICS AND DECORATION

GRAPHICS

Indicators for reuse:

- Digital Graphics

Indicators for recyclability:

- The manufacturer or supplier guarantees the return to recycling system
- Established take-back recycling system
- Unmixed material

Indicators for disposability:

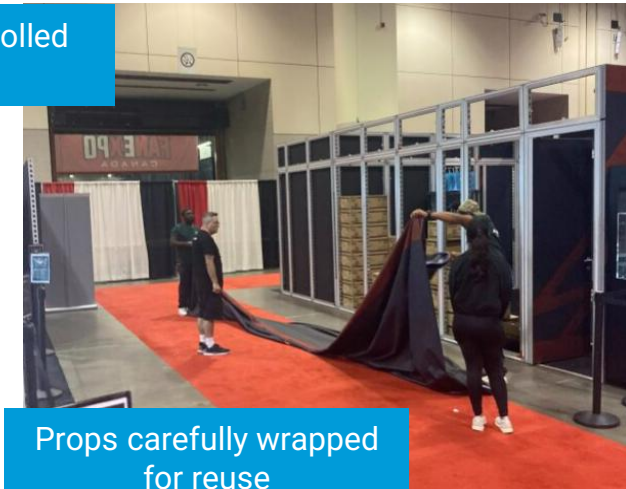
- Displaying date/ year
- Displaying show name

10. GRAPHICS AND DECORATION

INDICATORS OF REUSE



Neatly folded or rolled signage



Props carefully wrapped for reuse

Venue or contractor led recycling programme




Plants collected and/or donated are reused




10. GRAPHICS AND DECORATION


INDICATORS OF DISPOSABILITY



Decorative plants being thrown in the bin




TIP: Foamcore board is never recyclable but can be reused



TIP: PVC is rarely recyclable although can be reused if neatly packed



Signage thrown in trash



Crumpled signage being thrown away

FAQS



If my wooden booth is re-painted each time, does that count towards reuse?

Yes. The first element on the 10-step framework is the stand structure and walling. If the wooden walling has been used previously and re-painted, it is classed as reused.

How do you verify recycling of carpet?

As with all categories; collect photo evidence of practice. For graphics and carpet, we're collecting evidence where it's not reused (crumpled, torn, includes dates and locations in the print etc.)

What do I do if some furniture on a stand is reused but some isn't?

Use the 90/10 rule i.e. if more than 10% of furniture is disposed of, it is classed as disposable. If 10% or less of the furniture is disposed of, it is classed as reused.

A large, stylized blue graphic of an arrow pointing upwards and to the right, composed of thick, rounded lines, is positioned on the left side of the page.

Copyright notice

All Intellectual property rights in the Better Stands Brand or Material and Programme belong to NZCE.

The passing on of all documents, manuscripts, and presentation papers, in whole or in part, as well as the publication, duplication, distribution, reproduction, or any other utilization of the presented concepts, solutions, designs, and ideas, is not permitted without prior written consent from the Better Stands Secretary.

THANK YOU

For any questions, please email info@betterstands.org and a member of the team will get back to you.

Visit us on www.betterstands.org

